

# EST Ventless 3 Doors Quick Setup Instructions

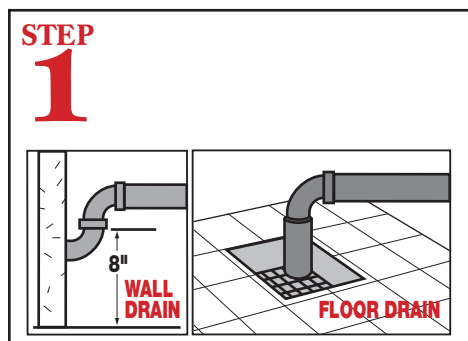
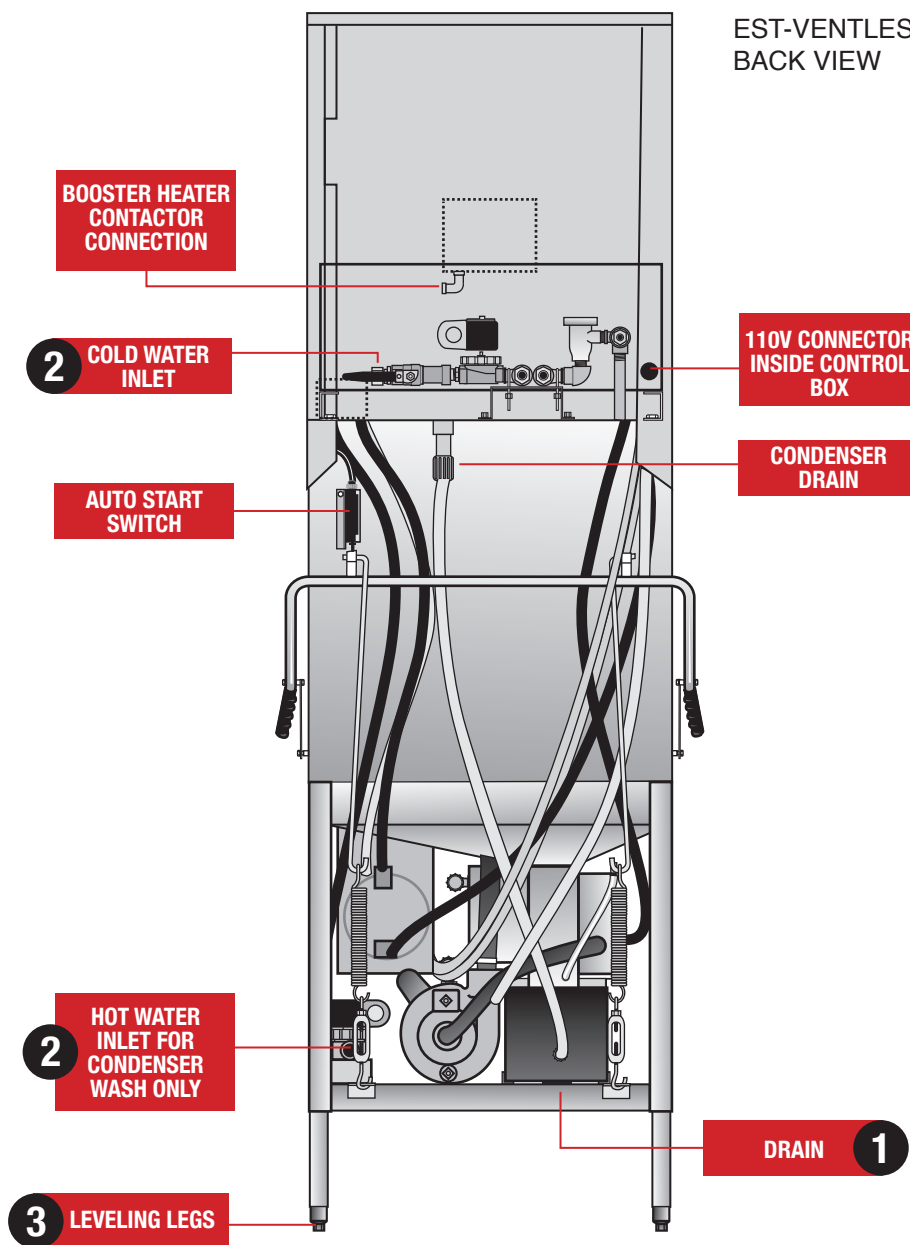


**WARNING** Electrical and plumbing connections need to be made by a licensed service person and comply with all Federal, State and Local Health, Electrical, Plumbing and Safety codes.

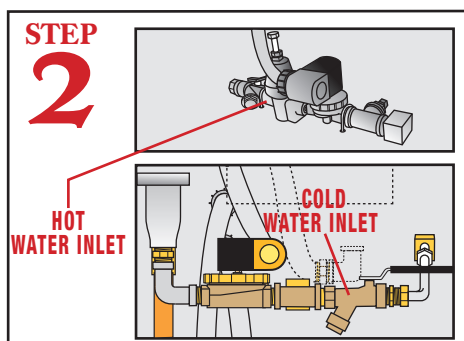
**WARNING:** the CMA-Ventless has a Heat Recovery (HR) system comprised of heat exchange coils, that can become restricted or clogged if the water supplied to the machine contains lime scale, better known as hard water conditions. The cold water supplied to the CMA-Ventless should be analyzed and treated, to maintain a maximum of 3 grains water hardness, to prevent scaled conditions. One of the first signs of "hard water" would be a restricted, or zero, water flow to the wash arms.

**Failure to provide soft water (3g or less) will void the machine's warranty.**

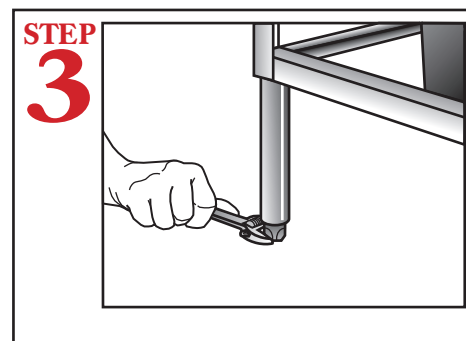
EST-VENTLESS 3-DOOR  
BACK VIEW



Connect a 2" drain pipe (not supplied) from scrap accumulator to floor or wall drain.



Connect dishmachine to hot water source 120°F - 140°F. Connect cold water inlet (min 41°F and max 65°F).



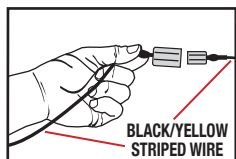
Level dishmachine by adjusting leveling legs. Dishmachine must be level front and back to ensure proper performance.

# EST Ventless 3 Doors Quick Setup Instructions

EST-VENTLESS 3-DOOR  
FRONT VIEW



**WARNING:** Electrical and plumbing connections need to be made by a licensed service person and comply with all Federal, State and Local Health, Electrical, Plumbing and Safety codes.



BLACK/YELLOW  
STRIPED WIRE

## BOOSTER HEATER DAMAGE PREVENTION

**CAUTION:** TO PREVENT BOOSTER HEATER ELEMENT DAMAGE, CMA HAS DISCONNECTED A WIRE FROM THE "THERMOSTAT". THE BOOSTER TANK **MUST** BE FILLED WITH WATER PRIOR TO CONNECTING THE "REMOVED" WIRE, AT THE INITIAL FILLING OF A NEWLY INSTALLED DISHMACHINE. THE BOOSTER TANK INDICATES FULL. WHEN YOU CAN OBSERVE WATER INSIDE THE MACHINE. AT THIS POINT, AND ONLY AT THIS POINT, SHOULD YOU CONNECT THE "DISCONNECTED" WIRE. **FAILING TO FOLLOW THESE IMPORTANT INSTRUCTIONS WILL DESTROY THE HEATING ELEMENT, BECAUSE THE ELEMENT SHOULD ONLY OPERATE WHEN FULLY SUBMERGED IN WATER.**

4 ON OFF SWITCH

5 FILL START SWITCH

RINSE

DETERGENT SANI  
PRIMER

CHEMICAL  
PUMPS

HEATER  
CONTACTOR

BOOSTER HEATER  
CONNECTION 5

DRAIN

COLD WATER  
INLET

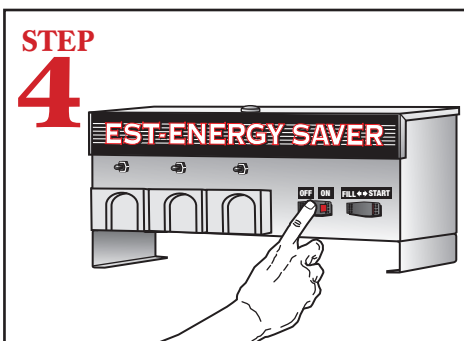
DOOR LOCK

DOOR HANDLE 6

BOOSTER  
HEATER  
THERMOSTAT 7

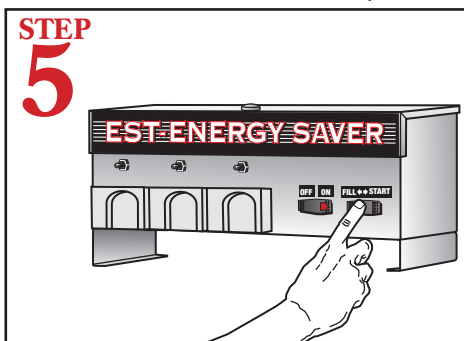
TEMPERATURE  
GAUGE

STEP  
4



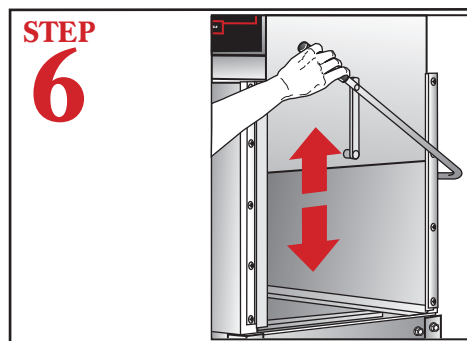
Press "POWER ON/OFF" rocker switch to turn on dishmachine. After machine is turned off, the condenser wash will activate automatically.

STEP  
5



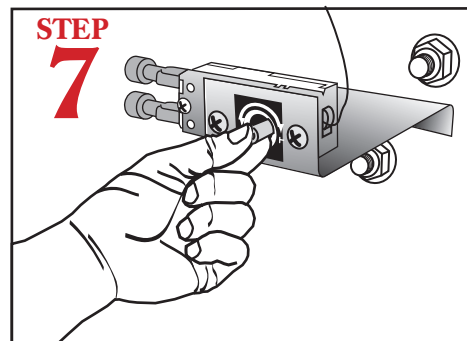
**Immediately after power is turned on,** press FILL switch to fill the booster heater. When the water begins to flow into the cabinet, connect the two wires (see step 5 for booster connection). Wait for 5 minutes to allow booster heater to reach temperature. Press FILL switch again to fill the wash tank.

STEP  
6



Open dishmachine doors completely. Closing the doors will automatically activate the machine and Door Safety Interlock will lock the doors until machine cycle is complete.

STEP  
7



Adjust the temperature by removing the panel in front of the respective heater and turning the adjustment post. Wash temp. 120°F./140°F.

