


# MAINTENANCE

 **Always disconnect the power cord before performing any machine maintenance.**

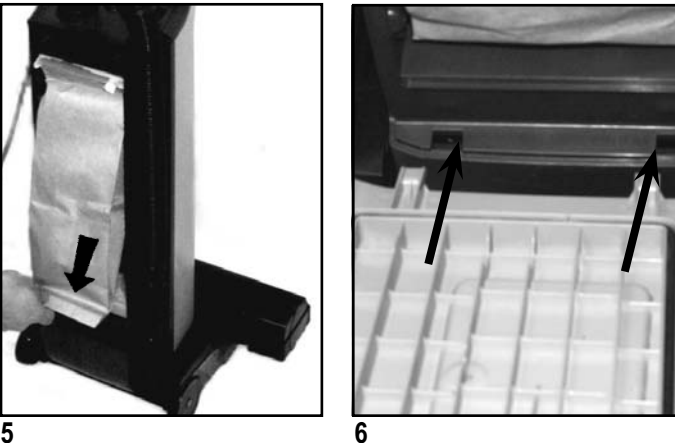
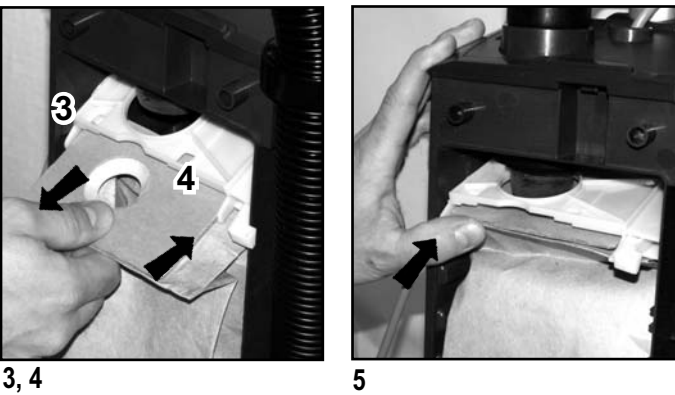
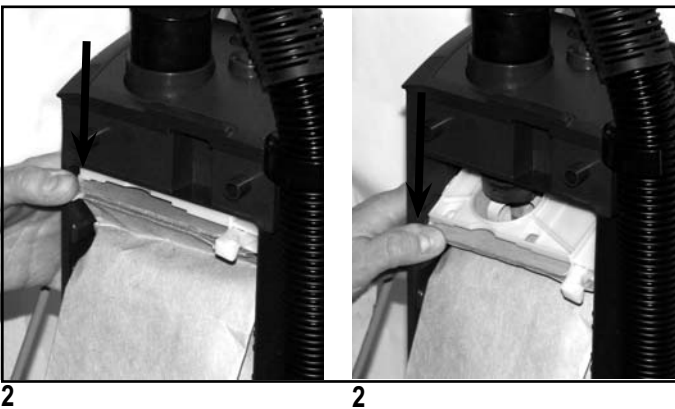
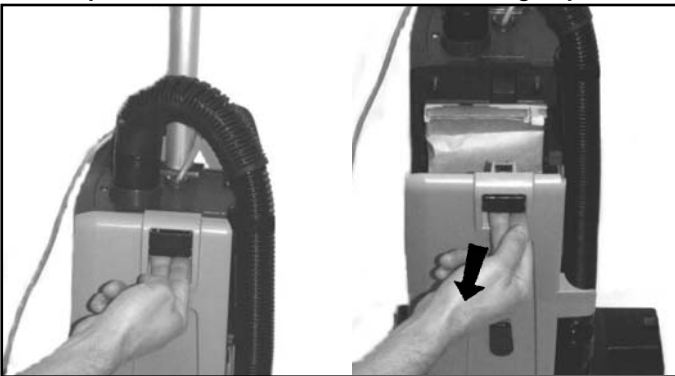
## CHANGING THE PAPER DUST BAG

Change the bag whenever the “Bag Full” (15) indicator comes on. To replace the Paper Dust Bag:

1. Disconnect the power cord from the electrical outlet. Pull the Dust lid button (16) and remove the Dust lid outwards to remove it from the cleaner.
2. Push downwards at the edge to the left of the plastic holder, so that the bag loosens from the vacuum inlet of the machine.
3. Grasp at the cardboard piece of the bag and gently pull the full bag outwards - away from cleaner.
4. Insert a new paper dust bag into the slot of the bag holder and push the bag in place. Check so that the paper dust bag not is jammed in the holder. Only the cardboard piece of the bag should be attached to the bag holder.
5. Push the bag holder with the new bag upwards, so that the bag inlet fastens to the inlet of the machine. Make sure that the bag is unfolded and will fit in place in the bag housing. Also check that the “no bag” clip is placed to the left so that the lid will be able to close.
6. Fit the two notches of the back cover to the two slots at the lower part of the bag housing, and push the back cover back in place at the housing.

### NOTE!

Photos belows shows changing of the paper dust bags!  
Never operate the machine without a Dust Bag in place.



## EMPTYING THE CLOTH DUST BAG

Empty the Bag whenever the “Bag Full” Light (15) comes on. To empty or to replace:

1. **Remove cloth bag as above in steps 1-3.**  
Disconnect the power cord from the electrical outlet. Pull the Dust lid button (16) and remove the Dust lid outwards to remove it from the cleaner.
2. Push downwards at the edge to the left of the plastic holder, so that the bag loosens from the vacuum inlet of the machine.
3. Grasp at the plastic flange of the bag and gently pull the bag outwards - away from cleaner.
4. Remove bag clip and shake out bag contents.
5. Put the bag clip back on the bag.
6. **Replace clean/new cloth bag into machine and close back cover as above in step 4-6.** Insert the cleaned/new cloth bag into the slot of the bagholder and push the bag in place so that bag is secured.
7. Push the bag holder with the new bag upwards, so that the bag inlet fasten to the inlet of the machine. Make sure that the bag is unfold and will fit in place at the bag housing. Also check that the “no bag” clip is placed to the left so that the lid will be able to close.
8. Fit the two notches of the back cover to the two slots at the lower part of the bag housing, and push the back cover back in place at the housing.