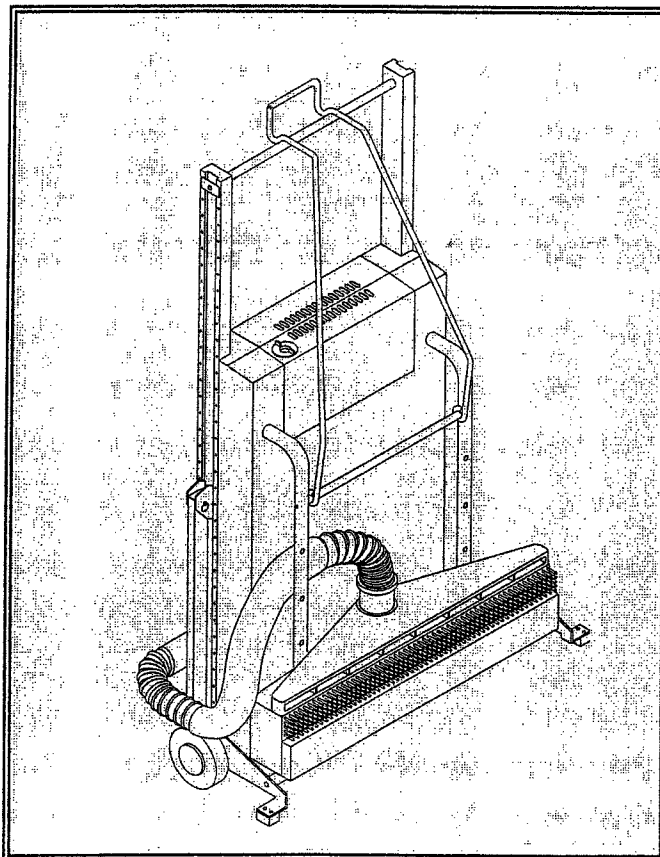


OWNER'S MANUAL

TREADMASTER

Escalator Step Cleaner



ISSA MEMBER
The Experts
on Cleaning and Maintenance

**CLEAN
MASTER®**
CORPORATION

TreadMaster

<i>Table of Contents</i>	<i>Page</i>
Machine Specifications	1
Operation	3
Daily Maintenance	6
Wiring Diagram	7
Machine Parts	10
Warranty Repair Policy	15
Warranty	16

Machine Serial Number _____

Copyright © 1998
CLEANMASTER® Corporation
Mukilteo, Washington

182-100

No part of this manual may be reproduced or used in any form or by any means (i.e. graphic, electronic, photocopying or electronic retrieval systems) without the express written permission of the CLEANMASTER® Corporation. All rights reserved.

Revised March 6, 1998

Machine Specifications

This machine is suitable for commercial use, for example in hotels, schools, hospitals, factories, shops and offices for other than normal housekeeping purposes.

◆ CAUTION ◆

This machine is not suitable for picking up health endangering dust.

◆ CAUTION ◆

This machine is for dry use only and shall not be used or stored outdoors in wet conditions.

Body: 18"W x 44"L x 18"H
Weight: 67 lbs.

Cleaning Head:

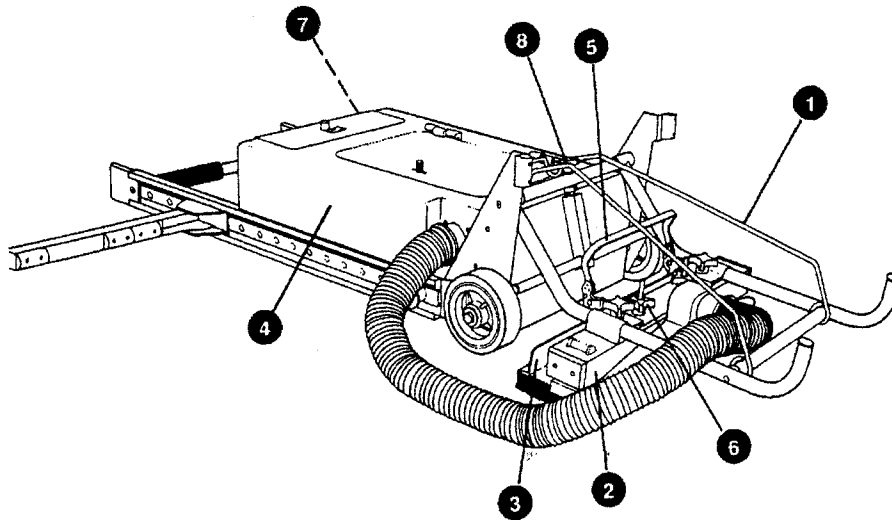
Size and Weight: 7"W x 24"L x 10"H - 58 lbs.
7"W x 32"L x 10"H - 69 lbs.
7"W x 40"L x 10"H - 80 lbs.

Vacuum Motor: (2) 1 5/8 HP motor

Power Draw:	110 / 115 volts AC	220 / 240 volts AC
	13.8 amps	6.9 amps
	50/60 hertz	50/60 hertz
	1587 watts	1587 watts

Construction: Durable Rotationally-molded Housing
Two Non-marking 6" x 2" Rubber Wheels
Extruded Aluminum Frame

Shipping Dimensions: 21" x 31" x 47"
12" x 15" x 43"



- | | |
|------------------------|------------------------------|
| 1 Lifting Arm | 5 Pad Holder and Lift Arm |
| 2 Cleaning Head | 6 Head Attachment Screws |
| 3 Polishing Pad Holder | 7 Power Socket (Not in View) |
| 4 Body | 8 Leveling Adjustment Knob |

Operation

◆ WARNING ◆

Before setting up the machine, turn off the escalator.

◆ WARNING ◆

To prevent possible electric shock, DO NOT operate the TreadMaster on any wet surfaces.

◆ WARNING ◆

This appliance must be earthed.

◆ WARNING ◆

If the plug on the power cord should be damaged, dispose of the plug cut from the power supply cord immediately. To prevent possible electric shock, DO NOT insert the plug into an electrical socket.

◆ CAUTION ◆

Match the size of your head assembly to the size of the step you are cleaning. Do not use a 24-inch head to clean a 32 or 40-inch step.

Operating Note...

Always place the TreadMaster where the steps are moving away from the unit. The TreadMaster can be operated from the top or the bottom of the escalator, however, bottom placement is preferred.

Setting Up...

1. Wheel the TreadMaster to the escalator in its 'upright' position.
2. Center the unit on the floor plate, between the handrails of the escalator.
3. Unlock the lifting arm and slowly lower the cleaning head onto the threshold.
4. Lower the unit until it lays flat on the floor.
5. Extend the restraining arms to their full locked position.
6. Slide the unit into the treadwell, making sure the restraining arms are firmly seated against the balustrades.
7. Adjust the head level to insure proper contact with the tread surface.
8. Remove the power cord, vacuum hose and warning sign from the tank body.
9. Attach the hose between the cleaning head and the tank nozzle.

Operation...

1. Adjust the level of the cleaning head to fit the groove surface. Make sure the polishing pad is clear. (To seat the brush in the grooves, set the polishing pad lever in the "up" position.)
2. Attach the safety sign to the crossbar handle.
3. Plug in the power cord at the machine receptacle first. Then plug the cord into the nearest rated outlet.
4. Turn the power switch on.
5. Prior to starting the escalator, review steps 1 through 9 under OPERATING INSTRUCTIONS.
6. Turn on the escalator, again making sure the direction of travel is **away** from the TreadMaster.

NOTE: For first-time cleaning, CleanMaster recommends that the unit be allowed to run for one hour for optimum results.

Polishing...

Pull the pad holder lift arm back toward the machine and down. This lowers the polishing pad to the tread surface and lifts the brush bristles from the grooves simultaneously.

Touch-Up Cleaning Hints...

Disconnect the hose from the vacuum head and attach the crevice tool. Before moving the unit, vacuum up the loose dirt (created by the scrubbing action of the brush) from around the cleaning head. Raise the head assembly and vacuum off the pad surface and the brush. These simple steps will prolong the service life of your equipment and reduce replacement costs.

Daily Maintenance

Refreshing and Replacing the Brush...

1. Place the polishing pad in the operating (down) position.
2. Now, withdraw the brush from its holder and inspect the bristles for wear. If the nylon grit bristles show obvious signs of wear, turn the brush around and reinsert, with the fresh bristles at the leading edge. This will allow for even, economical wear.
3. When the brush becomes ineffective, remove and replace it.

Replacing the Polishing Pad...

1. Place the unit in its upright storage position. Grip both ends of the pad and pull it away from its velcro holding strips. For economy, the pads are reversible, end to end, as well as face for face.
2. To replace the pad, simply align it on the velcro holder and press it firmly into place.

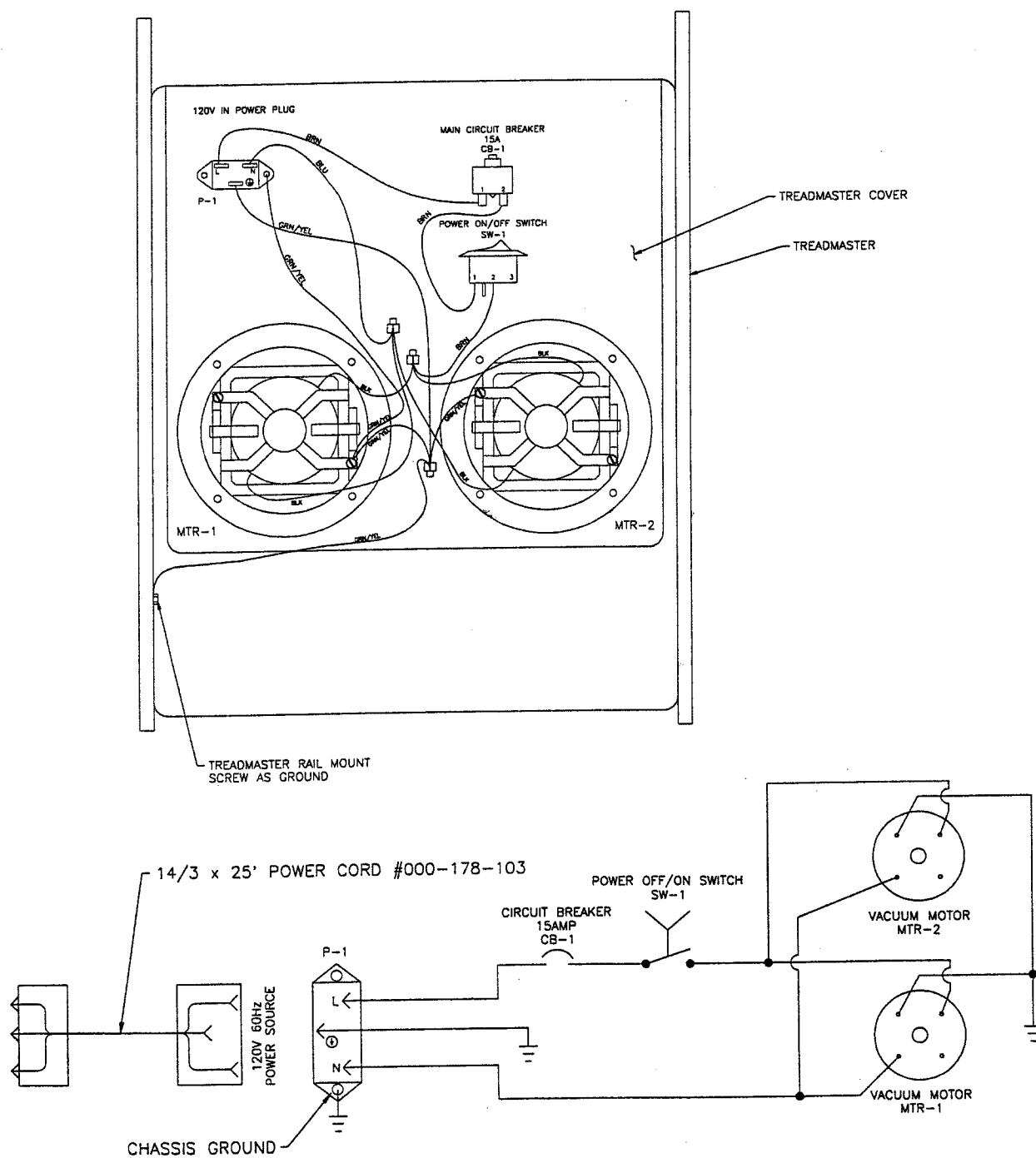
Cleaning the Vacuum Bag...

Open the tank access door. Release the bag from its holder by releasing the safety catch. Dispose of the contents in the appropriate manner and reinstall the bag. Close and latch the tank cover.

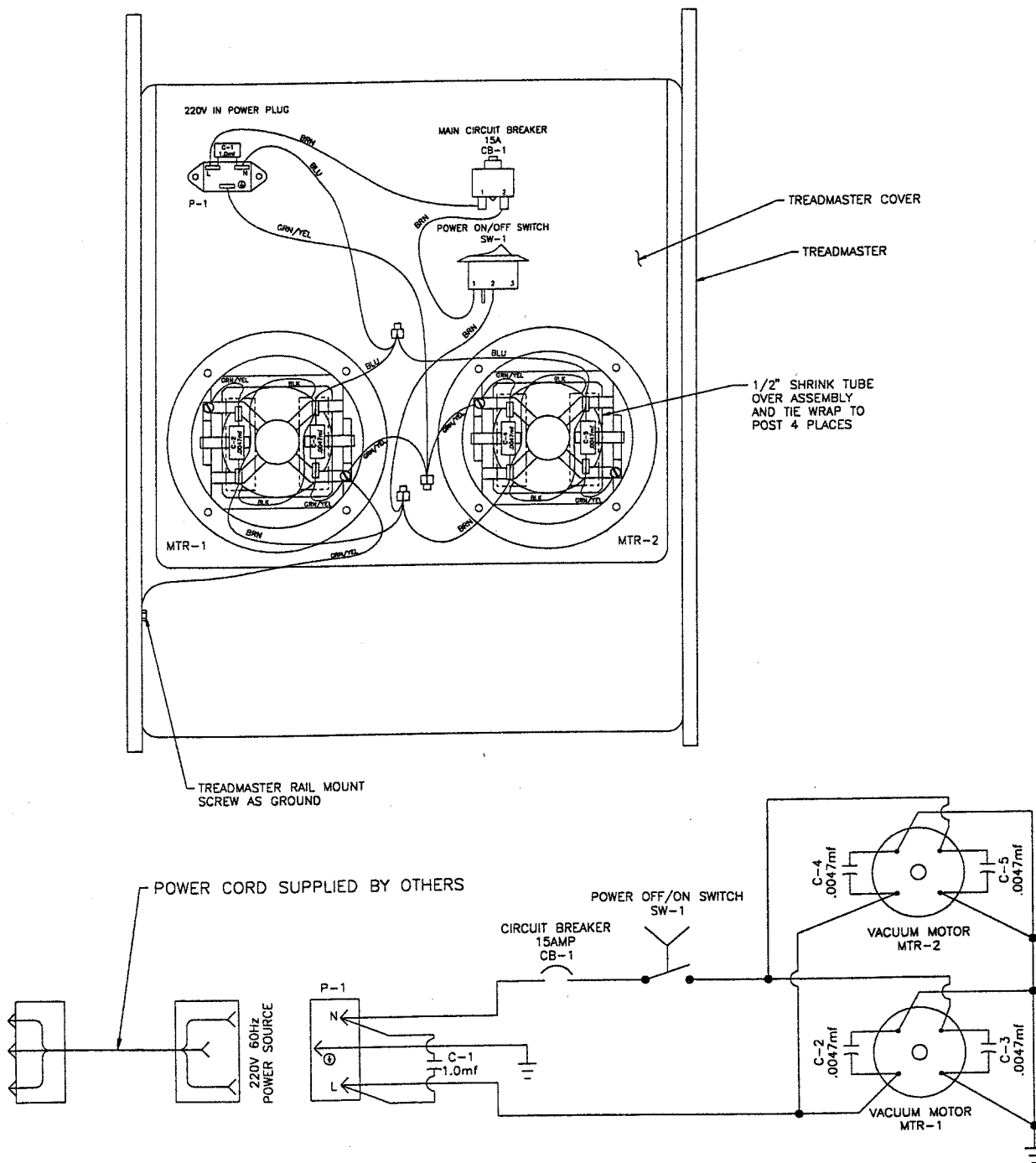
Using the Riser Brush...

This tool is used to remove dirt particles adhering to the riser. Attach a broom handle to the brush and sweep the riser face. As the dirt falls, it will be collected by the TreadMaster as the escalator cycles.

120 Volt Wiring Diagram



220 Volt Wiring Diagram



Electrical Information...

Important: The wires in this machine are colored in accordance with the following code: Green/Yellow - Earth, Blue - Neutral, Brown - Live.

As the colors of the wires in the power cord of this appliance may not correspond with the colored markings identifying the terminals in your plug, proceed as follows:

- a. The wire which is colored green/yellow must be connected to the terminal in the plug which is marked with the letter F or by the earth symbol \equiv or colored green or green/yellow.
- b. The wire which is colored blue must be connected in the terminal which is marked with the letter N or colored black.
- c. The wire which is colored brown must be connected to the terminal which is marked with the letter L or colored red.