



INSTRUCTION BULLETIN

No. 340753
Machine: T7/SSR
Published: 01-2007
Rev. 00

NOTE: DO NOT DISCARD the Parts List from the Instruction Bulletin. Place the Parts List in the appropriate place in the machine manual for future reference. Retaining the Parts List will make it easier to reorder individual parts and will save the cost of ordering an entire kit.

Installation instructions for **kit number 9000136**

SYNOPSIS:

This kit contains the parts needed to install the 650mm disk head assembly on T7/SSR machines. Please follow step-by-step instructions.

SPECIAL TOOLS / CONSIDERATIONS: NONE

(Estimated time to complete: 1 hour)



PROTECT THE ENVIRONMENT

Please dispose of packaging materials, old machine components, and hazardous fluids in an environmentally safe manner according to local waste disposal regulations.

Always remember to recycle.

PREPARATION:

1. Empty the solution and recovery tanks. Refer to the Operators Manual for instructions.
2. Park the machine on a clean level surface and if necessary raise the scrub head. Turn off the machine.
3. Remove the brushes from the machine.
4. Turn on the machine and lower the scrub head and squeegees.
5. Turn off the machine and remove the key.

FOR SAFETY: Before leaving or servicing machine, stop on level surface, turn off the machine, and remove the key.

6. Disconnect the battery cables from the batteries.



WARNING: Always disconnect battery cables from machine before working on electrical components.

7. Jack or lift the front end of the machine between 6" and 12" from the floor, slide the jack stands underneath the machine, and lower the machine onto the jack stands. Refer to the Operators Manual for instructions.

FOR SAFETY: When servicing machine, block machine tires before jacking up machine. Use a hoist or jack capable of supporting the weight of the machine. Jack machine at designated locations only. Support machine with jack stands.

8. Disconnect the cables from both scrub head drive motors and the wires and hose from the water solenoid valve. Refer to Fig. 1.

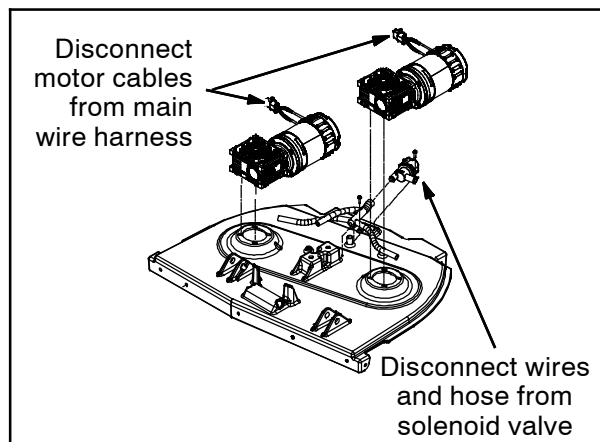


FIG. 1

9. Remove the hardware (A) holding the scrub head to the machine and slide the scrub head from under the machine. Set the hardware aside. Refer to Fig. 2.

10. Remove the lift arms (B) from the scrub head. Set the lift arms and hardware (C) aside. Refer to Fig. 2.

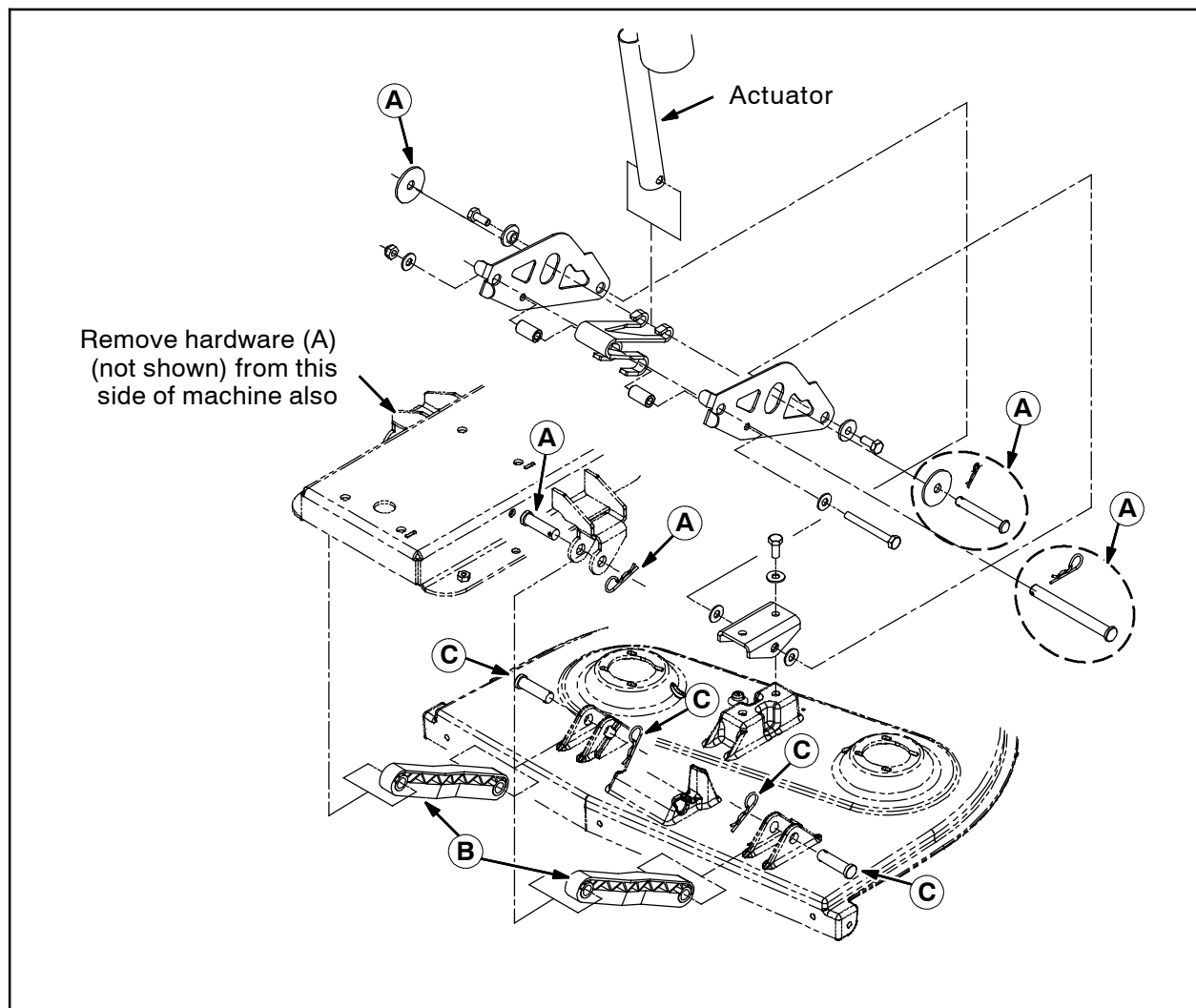


FIG. 2

11. Remove the center arm plates (D) and the scrub head lift spring (E) from the scrub head. Set center arm plates, scrub head lift spring, and all hardware (F) aside. Refer to Fig. 3.

12. Remove the lift bracket (G) from the scrub head. Set the lift bracket and hardware (H) aside. Refer to Fig. 3.

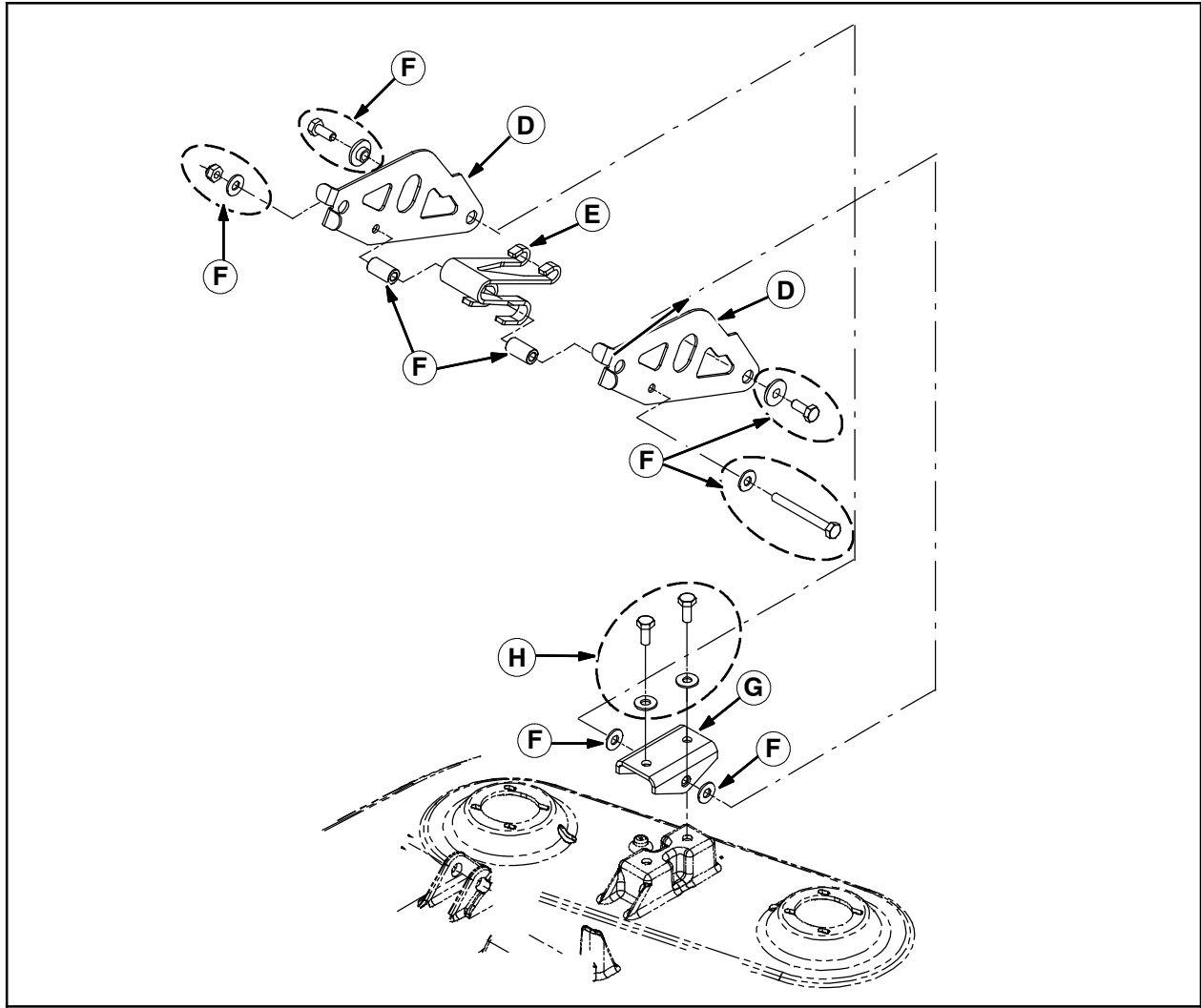


FIG. 3

INSTALLATION:

1. Use the saved hardware (H) to install the lift bracket (G) onto the new scrub head assembly. Refer to Fig. 3.
2. Use the saved hardware (C) to install the lift arms (B) onto the new scrub head assembly. Refer to Fig. 2.
3. Use the saved hardware (F) to install the center arm plates (D) and scrub head lift spring (E) onto the scrub head assembly. Refer to Fig. 3.
4. Position the scrub head under the machine and use the saved hardware (A) to install the scrub head onto the machine. Refer to Fig. 2.
5. Connect all loose hoses, wires, and cables disconnected from the removed scrub head to the new scrub head. Refer to Fig. 1.
6. Install the brushes onto the scrub head.
7. Remove the jack stands from under the machine and lower the machine to the floor.
8. Reconnect the battery cables to the batteries.
9. Start and test the machine. Check the hose connections for leaks. Ensure the brushes function.

TENNANT COMPANY
P. O. Box 1452
Minneapolis, MN 55440-1452