



**Nilfisk  
Advance**  
*setting standards*

## TECHNICAL SERVICE BULLETIN

**Number:** TSB-FC-2015-017

**Symptom:** Vac motor noisy

**Date:** 6th June 2015

**Urgency:** Low

**Author:** Alberto Rastelli

**Urgency:**

☐

**HIGH:** Rework needs to be done immediately

☐

**MEDIUM:** Rework needs to be done by next possible occasion

☒

**LOW:** Rework to be done if necessary

☐

**GENERAL:** General information

**SYMPTOM:**

Vacuum motor noisy and premature fails in about 6 month.

**PRODUCTS:**

SC350/351

SCRUBTEC 337/337.2

Vantage 14

**SYSTEM:**

Suction/recovery

**ISSUE:**

Dirt and wet into the vac motor so the upper bearing rust and get sized (fig.A)

**CAUSE:**

Multiple reasons; due to the position of the vacuum unit and the geometry of the recovery tank, as well the improper use cause water ingress (excessive foam in the recovery tank) or dust ingress (machine vacuuming dry floors)

**ECO / ODM #: 5980**

**PRODUCTION CORRECTIVE ACTIONS:**

1. New Ametek motor with added labyrinth and improved seal compound to increase the bearing protection against water. (fig.B1)
2. Added filter on the top of the vac inlet to avoid debris enter in the vacmotor fan. (fig. B2)

**PRODUCTION SOLUTION IMPLEMENTATION DATE and / or SERIAL NUMBER:**

First production machine Standard equipment:

Implementation Shipping Date: 2015 week 26

breaking Serial Number: 3510152602919

**Number:** TSB-FC-2015-017

**Symptom:** Vac motor noisy

**Date:** 6th June 2015

**Urgency:** Low

**Author:** Alberto Rastelli

**Urgency:**



**HIGH:** Rework needs to be done immediately



**MEDIUM:** Rework needs to be done by next possible occasion



**LOW:** Rework to be done if necessary



**GENERAL:** General information

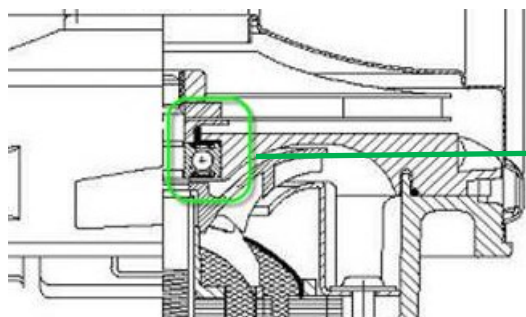
**SPARE PARTS or Kits Needed:**

1. Old PN 9100000674 closed, replaced by:  
new KIT **9100001238** - MOTOR VACUUM 12V 200W SEALED
2. PN **9100001278** - FILTER vac motor

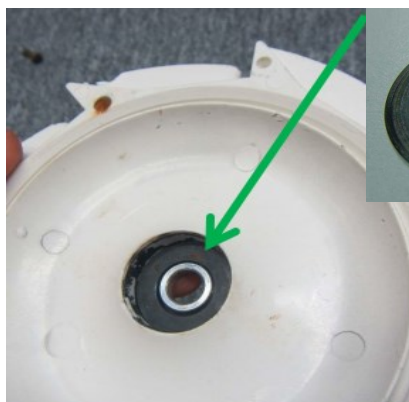
**FIELD CORRECTIVE ACTIONS:**

1. Replace the vac motor by the new Kit 9100001238, interchangeability guarantee.
2. Add the filter 9100001278 on the top of the vac inlet.

**COMPONENT LOCATIONS / PICTURES:**



**Fig. A**



**Fig B1 — seal protection for upper bearing**



**Fig B2 — filter**