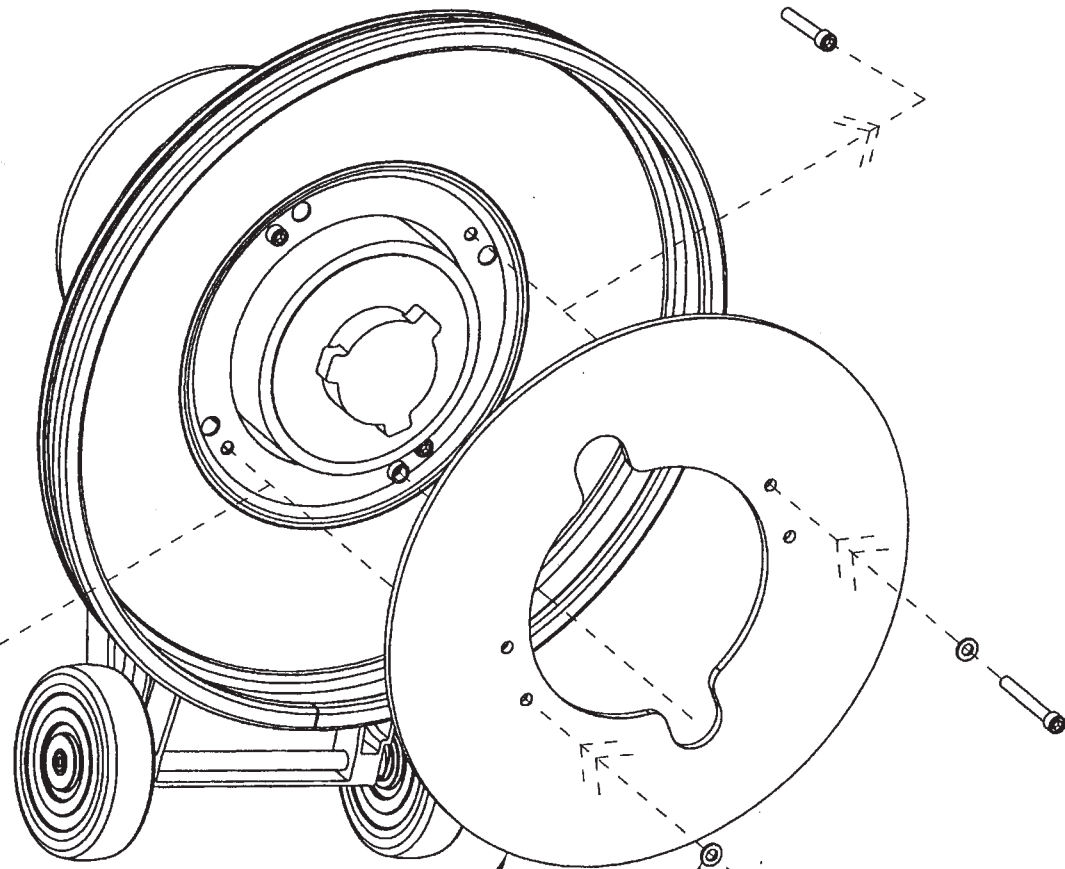


# Weight Kit 11022A

## Installation Instructions

Tools Required:  
1/4" Allen Wrench

REMOVE:  
SCREW, 5/16 - 18 UNC X 1-5/8" (SEMS)



WEIGHT MACHINE

LOCKWASHER 5/16

SCREW, 5/16 - 18 UNC X 2-1/2" LG