

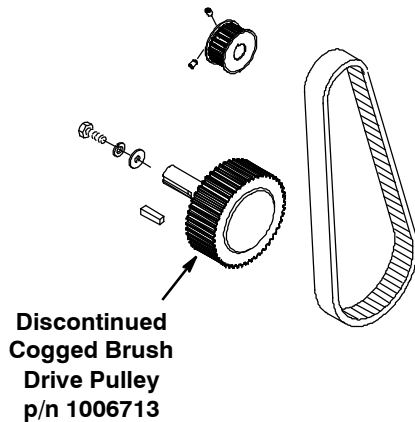
Belt & Pulley Replacement Kit



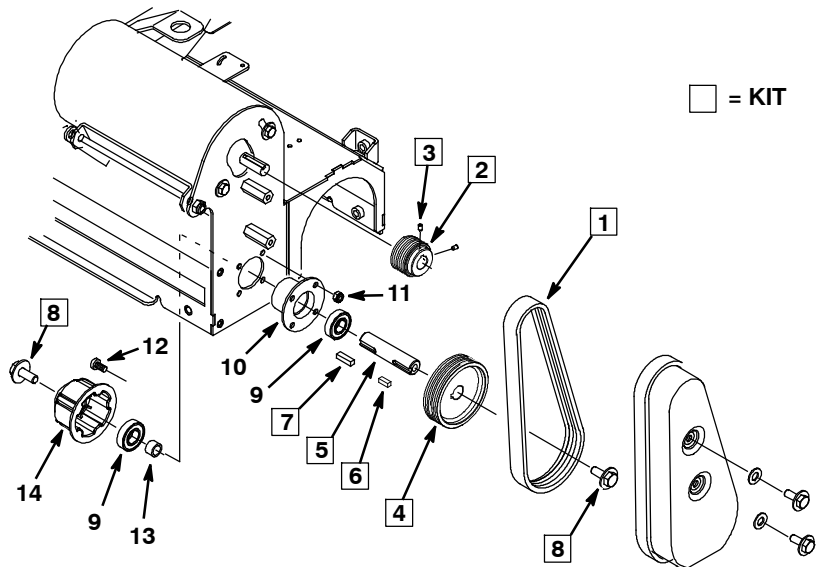
NOTICE: The cogged belt pulley, shown below at left, has been discontinued and replaced with a poly-V belt design. Install Replacement Kit as illustrated below.

Cogged Belt and Pulley Design

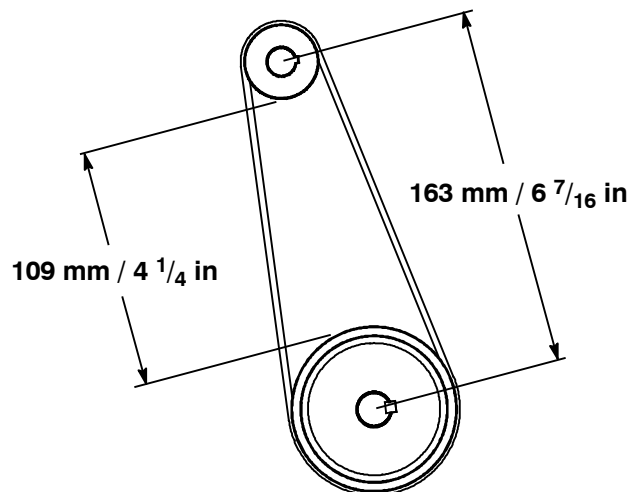
Models Manufactured before S/N 10343029



Poly-V Belt and Pulley Replacement Kit



Poly-V Belt Tension Adjustment Specifications



9008825 Kit Contents

REF	PART #	DESCRIPTION	QTY.
1	1035888	BELT, DRIVE, 6GRV, 508 L X 14 W	2
2	1033528	SHEAVE, 06GRV, 1.33PD 0.50B	2
3	222818	SCREW, SET, SOC, 08-32 X .25	4
4	1035173	SHEAVE, 06GRV, 2.96PD 0.59B	2
5	1021050	SHAFT, DRIVE, 15.0D X 65.5L	2
6	00961	KEY, SQ, 0.19 X 0.19, 0.50L	2
7	00911	KEY, SQ, 0.19 X 0.19, 0.75L	2
8	1020341	SCREW, HEX, M8 X 1.25 X 20	4

Replacement Parts (Not included in Kit)

REF	PART #	DESCRIPTION	QTY.
9	41360	BEARING, BALL, 0.59B 1.26D	4
10	1001792	HOUSING, BEARING	2
11	08712	NUT, HEX, LOCK, M6 X 1.00, SS	8
12	363503	SCREW, PAN, M6 X 12, SS	8
13	1002077	TUBE, 0.59ID 0.81OD 00.5I	2
14	378805	PLUG, DRIVE, BRUSH, MACH	2

Please keep this sheet with your owner's manual for future reference.