

GTS Newsletter

2021/08E

TASKI Service Tool - Lithium - Version 8.30

Machine	TASKI swingo 350, 455, 755, 760, 855, 955, 1255, 1260, 1650, 1655, 1660, 1850, 1855, 2100, 2500, XP, XP-M/R, IntelliSweep, 4000, 5000, AERO 3500, ULTIMAXX
Subassembly	Service Tool

New TASKI Service Tool with new TASKI machines and other updates–Version 8.30

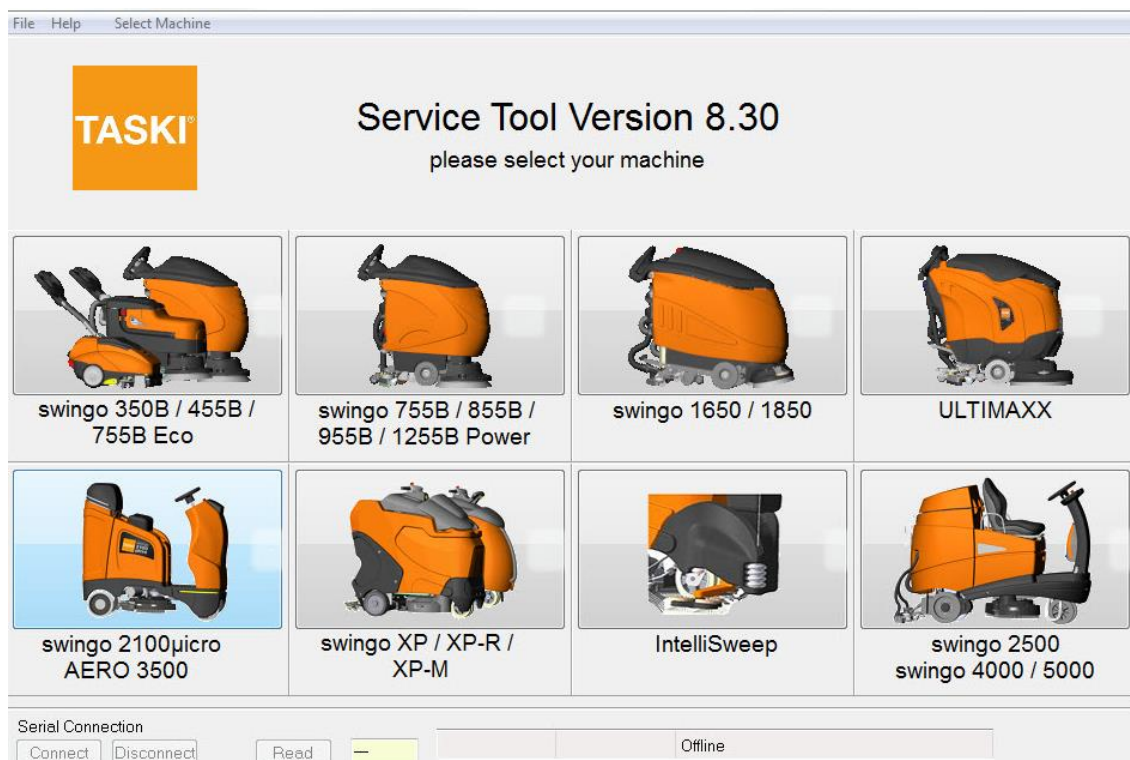
The new TASKI ULTIMAXX and swingo 2500 with SmartMEL electronics has been added to the TASKI Service Tool as well as a few harmonisations.

Furthermore the TASKI Service Tool has been modified to change the discharging curve to Lithium on following machines:

- TASKI swingo 1650 / 1850
- TASKI swingo 1655 /1660 /1855

The connection with the new Service Tool and TASKI ULTIMAXX, swingo 2500 with the SmartMEL is done automatically as known from other machines equipped with the SmartMEL electronics. Therefore no USB driver is needed.

There are no new drivers necessary to run machines with the TASKI Service Tool on your computer, just ensure the drivers provided in TASKI spares are installed.



Service Information

- | | |
|---|--|
| <input type="checkbox"/> Check parts on stock | <input type="checkbox"/> Return defective parts to Münchwilen |
| <input type="checkbox"/> Proactive exchange recommended | <input type="checkbox"/> NO proactive exchange recommended |
| <input type="checkbox"/> Modification is backwards compatible | <input checked="" type="checkbox"/> Modification is NOT backwards compatible |
| <input type="checkbox"/> Update/modify machines in the field | <input type="checkbox"/> Entitled to warranty |
| <input type="checkbox"/> Dispose/recycle defective parts | <input type="checkbox"/> Parts are available ex stock Münchwilen |
| <input checked="" type="checkbox"/> Others | |

Computer/laptop requirements

- USB interface which are enabled, else contact your local IT support
- We recommend using the new TASKI Service Tool with Windows 10
- Windows 7/8 is still supported, but not recommended as the full function could be limited.

We recommend the distribution of the new version of the TASKI Service Tool V8.30 to all service engineers so that all service relevant data can be extracted from any TASKI machine.

The new TASKI Service Tool V8.30 as well as the necessary USB drivers are available with immediate effect and can be downloaded from TASKI Spares:

TASKI Spares online/ Documents/Software/TASKI swingo -TASKI AERO/Service_Tool_Version_V8.30

The manual for the new TASKI Service Tool has not been yet updated and will follow in due time to the launch of TASKI ULTIMAXX.

Production

Service tool is not used in production