

Technical Service Bulletin

MODEL(S) T300/T300e Models

AFFECTED: Models manufactured in N. America before serial number 10778394 (December 23, 2015)
Models manufactured in Europe before serial number U11213 (November 26, 2015)

SUBJECT: Scrub head lift pedal difficult to disengage from raised position.

PURPOSE: To improve scrub head lift pedal function, order Pedal Latch Upgrade Kit p/n 9014788.

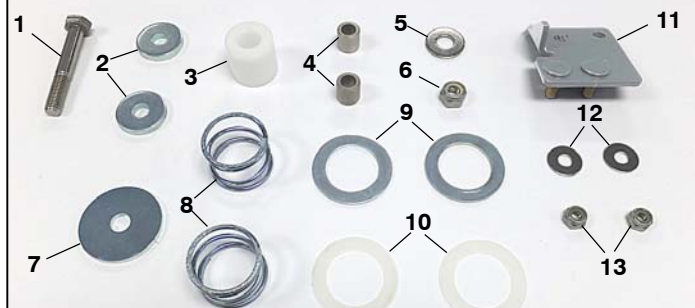
NOTES: **Warranty Information:** Standard warranty terms apply.

Scrub head lift pedal function.



The Pedal Latch Upgrade Kit includes the necessary parts to rework all model types (Disk, Orbital and Cylindrical).

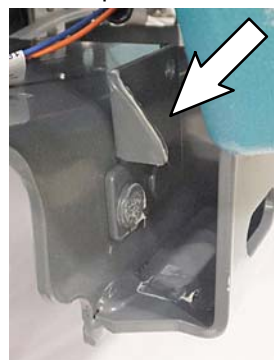
9014788 Pedal Latch Upgrade Kit Contents



Old style pedal latch



New kit pedal latch



New kit slide roller assembly
(Disk/Orbital models)



New kit slide roller assembly
(Cylindrical models)



Ref	Part No.	Description	Qty.
1	222504	Screw, Hex, Lock, M6 x 1.00, NL, SS	1
2	1028796	Washer, Flat, 0.33B 1.00D .18, STL, PL	2
3	1014020	Roller, 0.99D 0.50B 0.95L, acetal	2
4	222460	Sleeve, p/m, 0.32B 0.50D 0.5L	2
5	01685	Washer, Flat, 0.38B 0.88d .08, SS	1
6	08713	Nut, Hex, Lock, M8 x 1.25, NL, SS	1
7	379829	Washer, Flat, 0.43B 1.50D .12, Stl, PL	1
8	1210103	Spring, Cmpr, 1.23OD 0.085wir 0.88L	2
9	20955	Washer, Flat, 1.03B 1.50D .04, Stl, PI	2
10	1210112	Washer, Flat 1.03B 1.50D .03, Nylon	2
11	1223078	Bracket Weldment, Latch	1
12	01684	Washer, Flat, 0.27B 0.69D .05 ss	2
13	08712	Nut, Hex, Lock, m6 x 1.00, NL, ss	2
	9014787	Instructions, Kit Installation	1