

Checking the BCM Power (Blank Touch Screen)

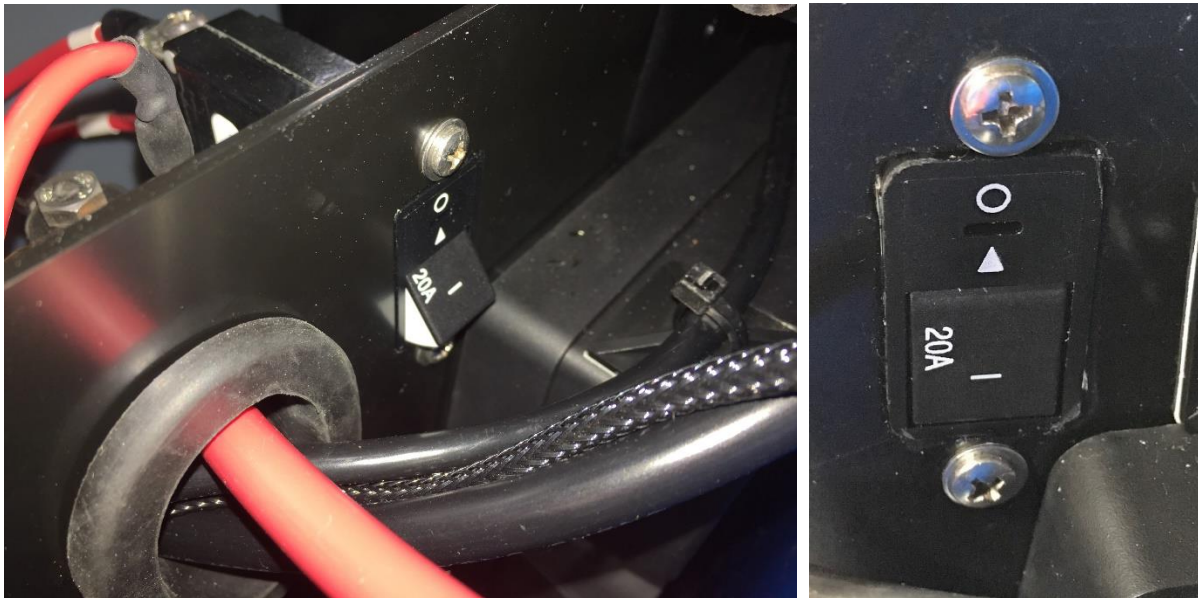
Unplug scrubber from charging unit. Key on and verify screen stays dark. Do the right panel lights illuminate on the scrubber?



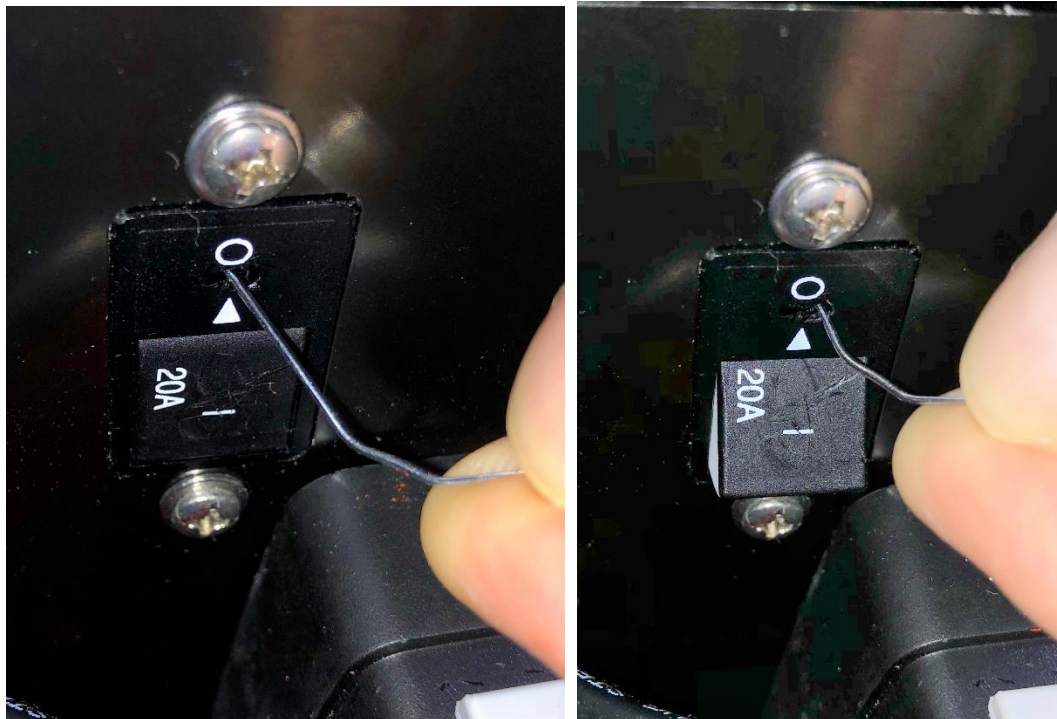
Key-off and do a hard reboot by unplugging the red battery coupling for 2 minutes.



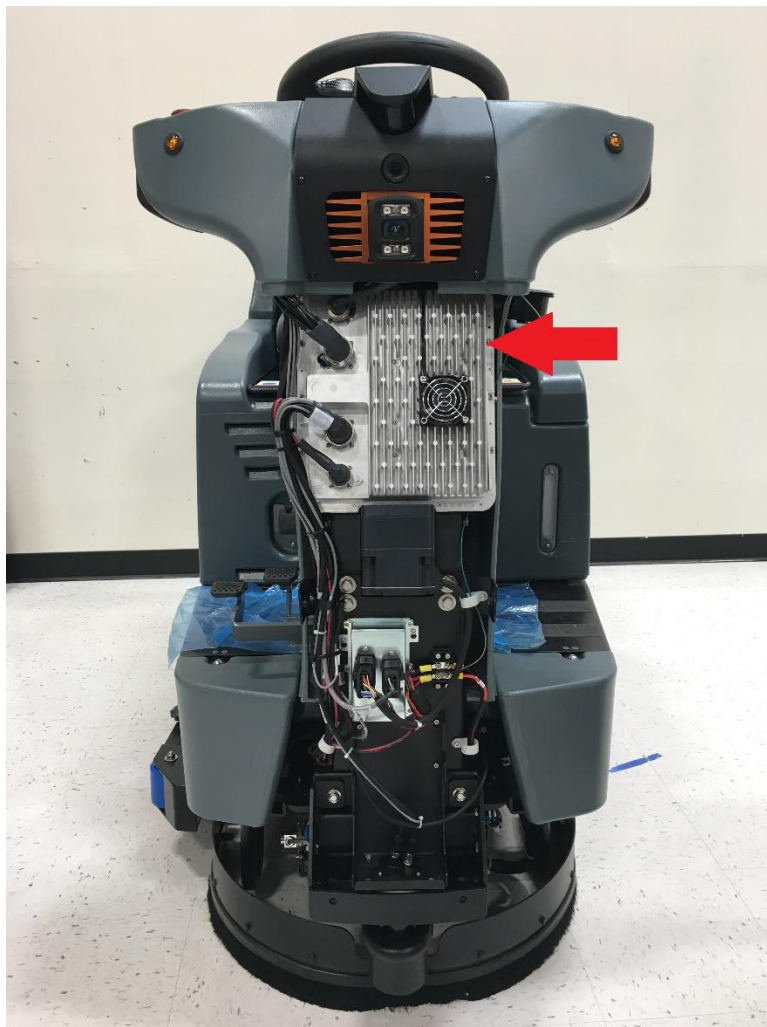
While waiting, inspect the 20A circuit breaker beneath the seat. If the 20A circuit breaker is popped out as shown, push it back in so that it is flush with the mounting wall.



Key-off, trip and reset the BCM circuit breaker by pushing the end of a paperclip in the slot above (O)FF. Once it pops out, push it back in.



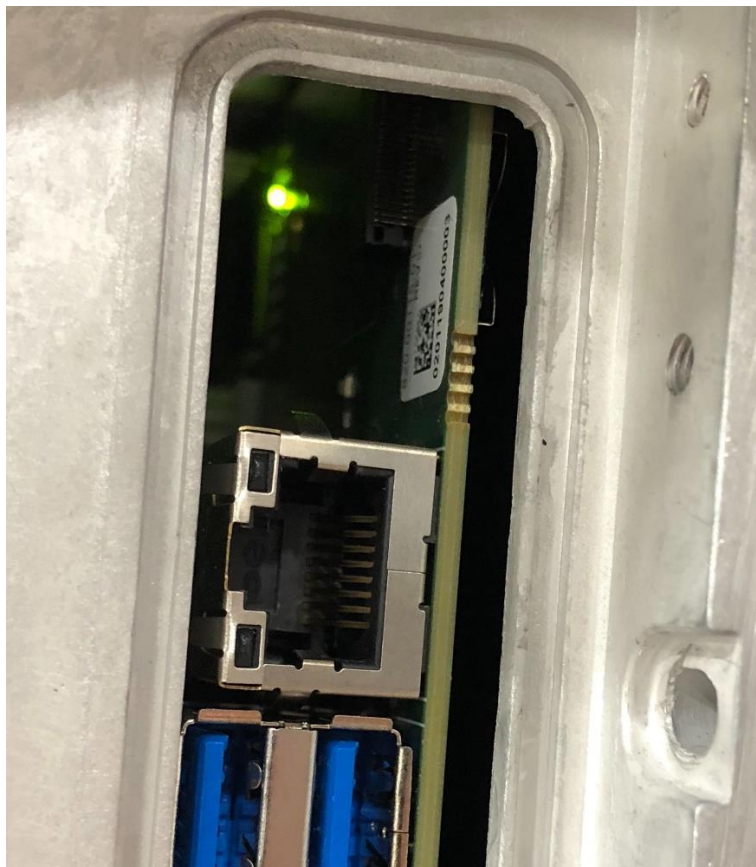
Key-on with the circuit breaker reset and check if the screen is still off. If so, remove the front cover of the scrubber to gain access to the BCM



Open the access panel on the side of the BCM and check for power sequence lights



With the key off there should still be one light lit



The table below defines the function for each LED, the table is placed in the same order found on the board. The sequence shows the order they light when the key is turned on.

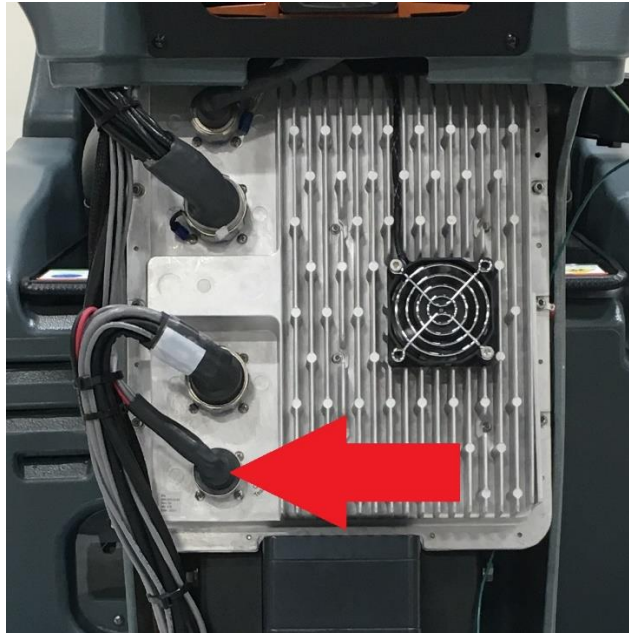
Ref. Des.	Color	Power on Sequence	Description and Function
D28	Red	2	Power On (PWR_ON)
D23	Green	4	P24V Ok
D32	Green	7	P15V Ok – will not ignite on 124 and higher boards
D31	Green	3	P12V Ok
D30	Green	5	P5V Ok
D29	Green	6	P3V3
D28	Green	Always on	S3V3 & S5V Ok – Always on when power applied
D27	Green	8	ComE Status Ok
D34	Green	1	Key in On State (KEY_ON)

If no lights are lit, check for approximately 24v across the terminals near the Motor Amplifier Module



If less than current battery voltage is displayed, check whether a breaker in the battery compartment has been tripped.

Disconnect the batteries before disconnecting the lower connector of the BCM (power trunk)



Reconnect batteries to test for voltage

Check for voltage across the two largest holes on the power trunk connector



Disconnect batteries prior to reconnecting the power trunk to the BCM

All lights sequence complete, we will need to order a replacement touch screen

D28 Green is on but D34 never lights, you need to verify key switch operation

Lights start to sequence but don't complete, we will order a new BCM

Power at terminal but not at BCM connector, we will order a power trunk