

# On-Board Charger Kit

Models: T5e, Speed Scrub 24-32"



## INSTALLATION INSTRUCTIONS:

**Installation Time: 2 Hours**

**TOOLS REQUIRED:** 9/16", 5.5mm and 10mm  
Sockets, 4mm Hex Wrench, Phillips Screwdriver,  
Blue Thread Adhesive

### PREPARATION

1. Park the machine on a clean level surface.
2. Turn off the machine and remove the key.
3. Disconnect the positive battery cable.

**FOR SAFETY:** Before installing kit, stop on level surface, turn off machine, and remove key.

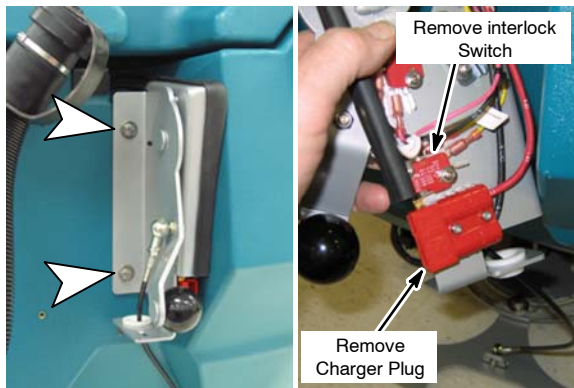
**⚠ WARNING: Electrical Hazard.**  
Disconnect Battery Cables Before Installing Kit.

**FOR SAFETY:** Wear protective gloves and eye protection when handling batteries and battery cables. Avoid contact with battery acid.

### INSTALLATION

1. Lower the squeegee lift lever to relieve tension on the lift cable, then remove the squeegee lift bracket. Remove the red charger plug assembly and charger interlock switch from the bracket. Discard the interlock switch (Figure 1).

**IMPORTANT:** Failure to remove these parts may result in electrical damage to the machine.

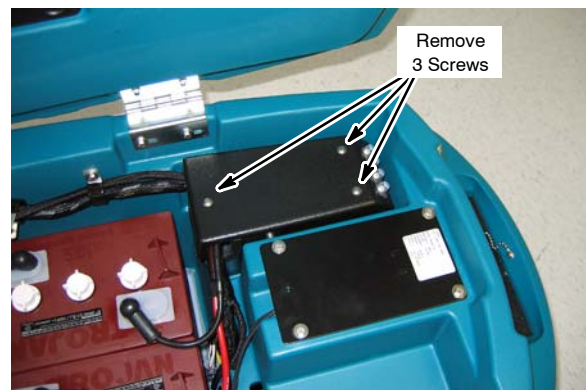


**Fig. 1**

### Kit Contents

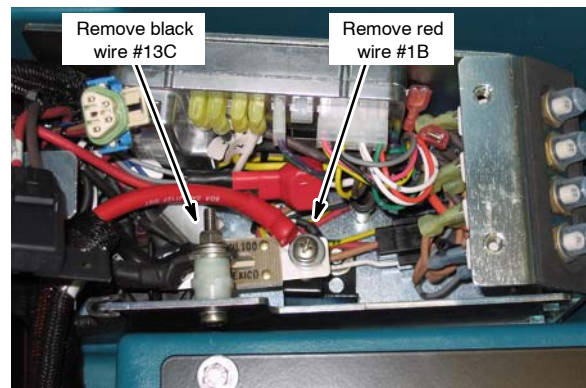
Part No.	Description	Qty.
1022874	Charger, 120v (Kit #9003297)	1
1026909	Charger, 230v (Kit #9003298, 9003299, 9003300)	1
1025642	Cord, Power (Kit #9003297 - U.S. / Japan)	1
1032849	Cord, Power (Kit #9003298 - Europe)	1
1026330	Cord, Power (Kit #9003299 - China)	1
1026325	Cord, Power (Kit #9003300 - Aus.)	1
609062	Screw, Trs, M5 x 0.80 x 12, Phl, SS	3
01683	Washer, Flat, 0.22B 0.50D .05, SS	2
01684	Washer, Flat, 0.27B 0.69D .05, SS	1
610906	Hook, Cord	2
1024965	Bolt, Shld, 08MMD x 030mm, M06 x 1.0	2
611311	Spring, Cmpr, 0.40OD .05WIR, 0.5L	2
26395-2	Clamp, Cable, Stl, 0.38D x 0.38W	1
1028175	Label, Instr. (Charger Settings)	1

2. Move to the front of the battery compartment and remove the control box cover to access the wire connections (Figure 2).



**Fig. 2**

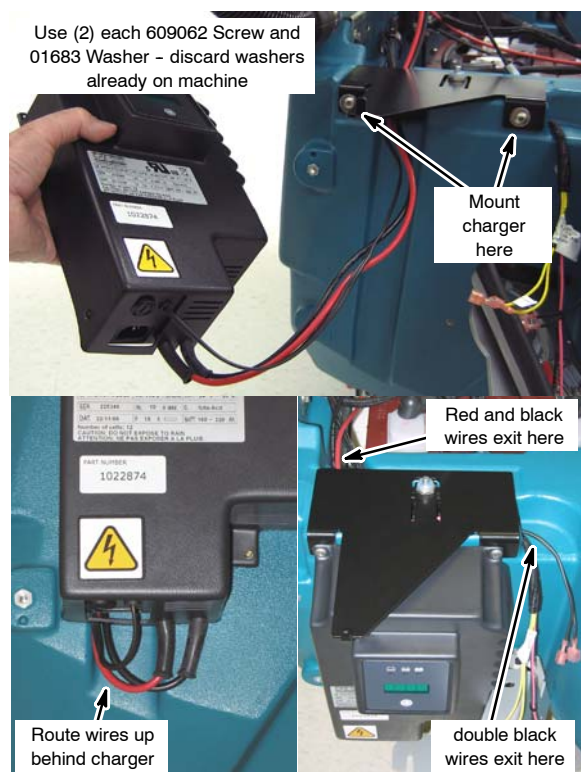
3. Remove the red (#1B) and black (#13C) wires coming from the charger plug. Discard charger plug assembly (Figure 3).



**Fig. 3**

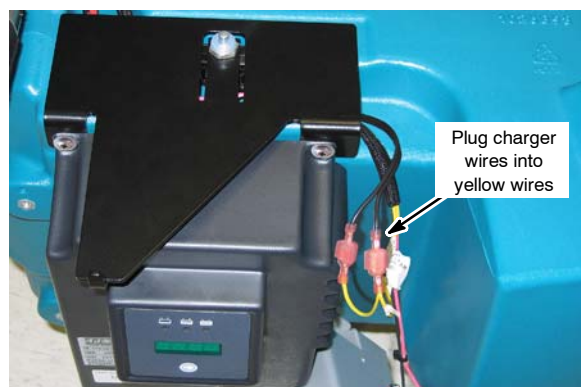
## On-Board Charger Kit INSTALLATION INSTRUCTIONS - Continued

- Mount the on-board charger to the machine in the location shown with the wiring routed up in the channel behind the charger. Use just the top two mounting screws at this step, and use a small amount of blue adhesive on the screw threads. Route the red and black wires forward to the battery compartment. Route the double black wires to the right and down to the squeegee bracket as shown (Figure 4).



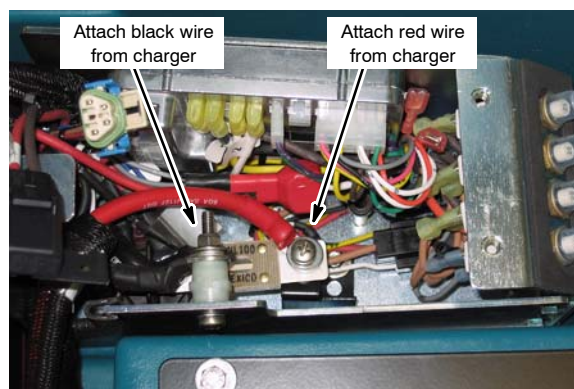
**Fig. 4**

- Plug the double black wires into the yellow wires (#4 and #54) that were originally on the charger interlock switch (Figure 5).



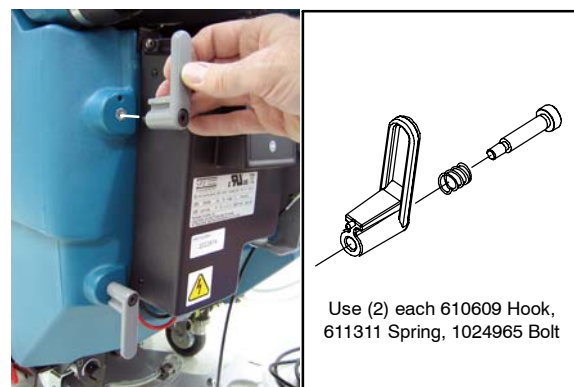
**Fig. 5**

- Route the red and black charger wires forward to the control box and attach them where the old charger plug wires were removed. Take special care to properly re-tighten all hardware. Loose connections will cause electrical damage to the machine. Re-attach control box cover (Figure 6).



**Fig. 6**

- Re-attach squeegee lift bracket to machine.
- Attach (2) cord hooks to machine as shown (Figure 7).



**Fig. 7**

- Plug the power cord into the charger. Secure the cord to the machine using the clamp, mounting screw, and flat washer provided in the kit. Use a small amount of blue adhesive on the screw threads. When not in use, wrap cord neatly around cord hooks (Figure 8).



## On-Board Charger Kit INSTALLATION INSTRUCTIONS - Continued



Fig. 8

10. Apply the new battery label to the wall of the battery compartment in the location shown (Figure 9).

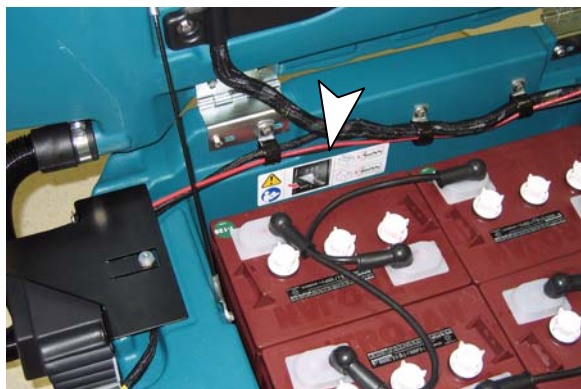


Fig. 9

11. Refer to your machine's operator manual for charger instructions.

### ON-BOARD BATTERY CHARGER SETTINGS

The charger settings must be set for your battery type before charging. Failure to properly set will result in battery damage.

To determine your battery type - sealed or wet / lead acid, see battery label. Contact your battery supplier if unknown.

To verify the setting of the charger, connect the charger cord into an electrical receptacle. The charger will display a sequence of codes. One of the codes will either read "GEL" or "Acid" (Figure 10).

GEL = Set for sealed/maintenance free batteries  
Acid = Set for wet/lead acid batteries



Fig. 10

To change the setting, unplug the charger, peel up the corner of the display label and set the switches accordingly (Fig. 11). The charger cord must be unplugged when resetting.



Fig. 11