



INSTRUCTION BULLETIN

No. 340405
Machine: 5680
Published: 05-2007
Rev: 02

NOTE: DO NOT DISCARD the Parts List from the Instruction Bulletin. Place the Parts List in the appropriate place in the machine manual for future reference. Retaining the Parts List will make it easier to reorder individual parts and will save the cost of ordering an entire kit.

NOTE: Numbers in parenthesis () are reference numbers for parts listed in Bill of Materials.

Installation instructions for kit number 397745

SYNOPSIS:

This kit contains the parts needed to install a 700D scrub head on the 5680 scrubber.
Please follow step-by-step instructions.

SPECIAL TOOLS / CONSIDERATIONS: NONE

(Estimated time to complete: 1 hour)

PREPARATION:

1. Stop the machine on a level clean surface, lower the scrub head, and turn off the machine.

FOR SAFETY: Before leaving or servicing machine, stop on level surface, turn off machine, and remove key.

2. Remove the front cover from the machine.
3. Disconnect battery cables from the batteries.



WARNING: Always disconnect battery cables from machine before working on electrical components.

REMOVE THE OLD SCRUB HEAD:

NOTE: Refer to FIG. 11 and FIG. 12 for detailed drawings of parts assembled throughout this Instruction Bulletin.

1. Disconnect the solution line from the tee fitting. Refer to FIG. 1.

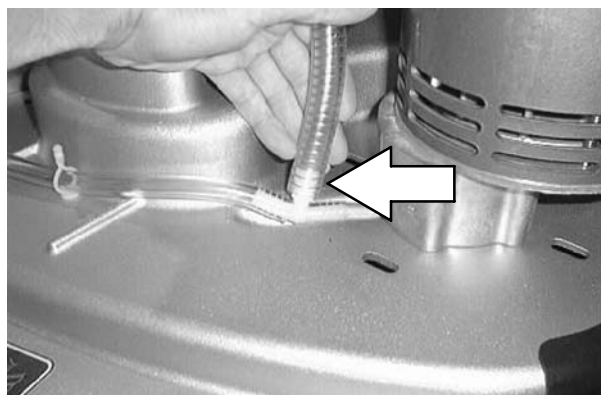


FIG. 1

2. Disconnect the wire harness from the old scrub motors. Refer to FIG. 2.

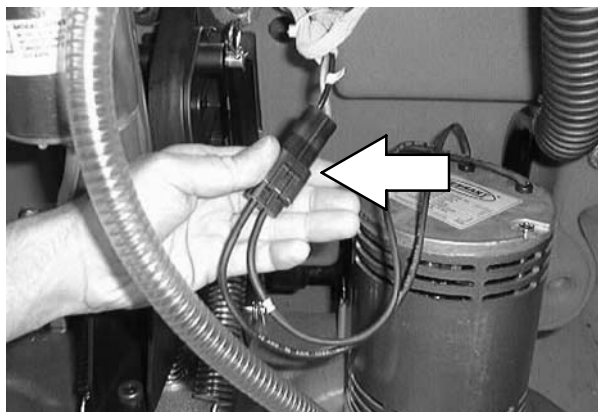


FIG. 2

3. Disconnect the scrub head from the guide by removing the clevis pin. Refer to FIG. 3.

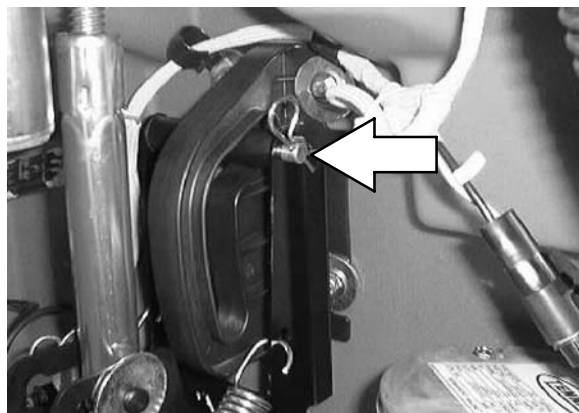


FIG. 3

4. Remove the two clevis pins from the scrub head lift arms and disconnect the scrub head lift arms from the scrub head. Refer to FIG. 4.

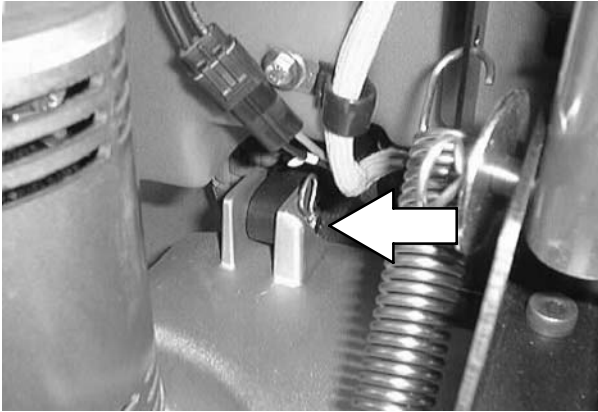


FIG. 4

5. Mark the actuator tube location on the actuator shaft. Refer to FIG. 5.

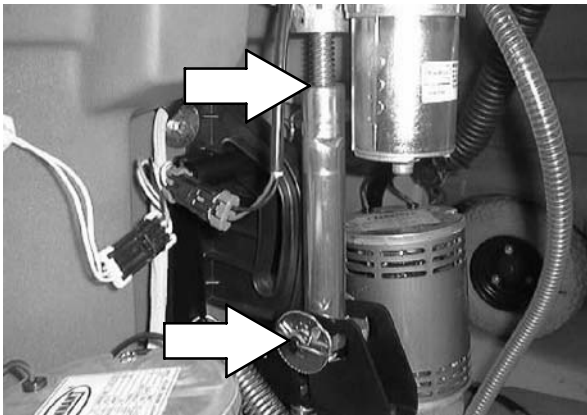


FIG. 5

6. Remove the clevis pin from the actuator and disconnect the actuator from the scrub head. Refer to FIG. 5.

INSTALL THE NEW SCRUB HEAD:

1. Connect both of the lift arms to the scrub head with the clevis pins. Refer to FIG. 6.

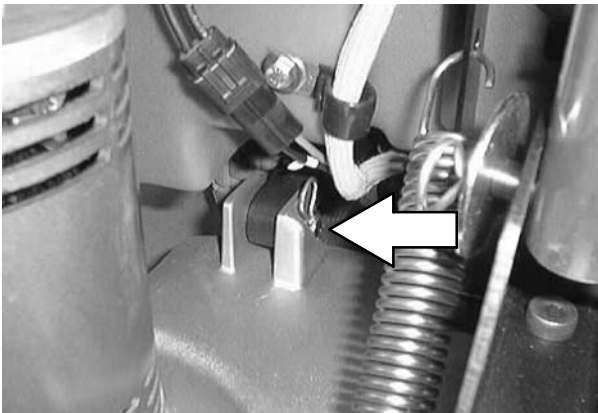


FIG. 6

2. Connect the scrub head to the guide with the larger clevis pin (22) and roller (21). Refer to FIG. 7.

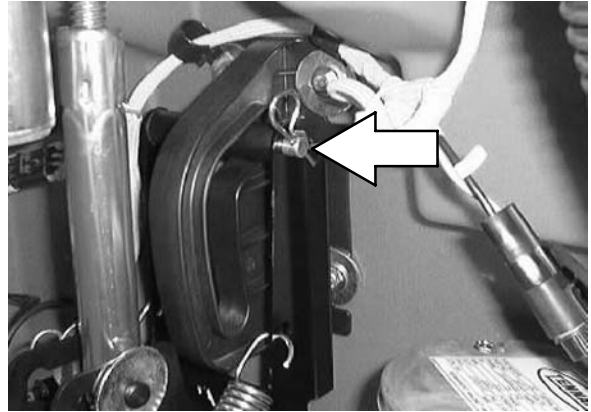


FIG. 7

NOTE: Be sure the actuator tube is aligned with the mark previously made on the actuator shaft. If not, turn the actuator shaft until it is aligned.

3. Connect the actuator to the scrub head with the clevis pin. Refer to FIG. 8.

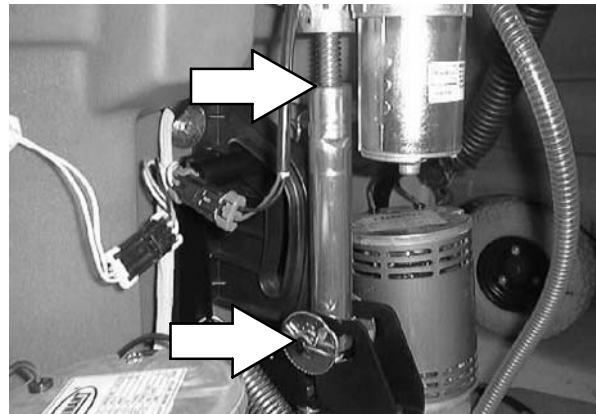


FIG. 8

4. Connect the scrub head wire harness to the main wire harness. Refer to FIG. 9.

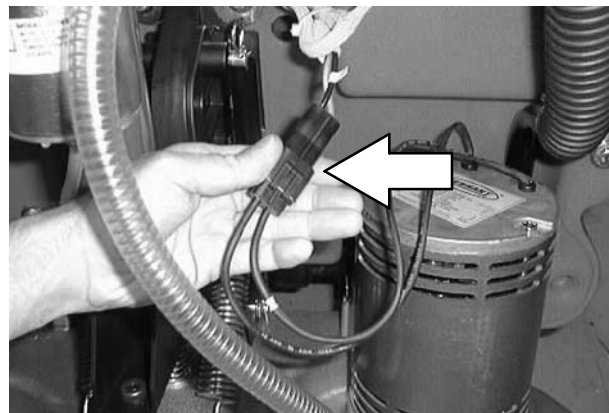


FIG. 9

5. Connect the solution line to the scrub head tee fitting. Refer to FIG. 10.

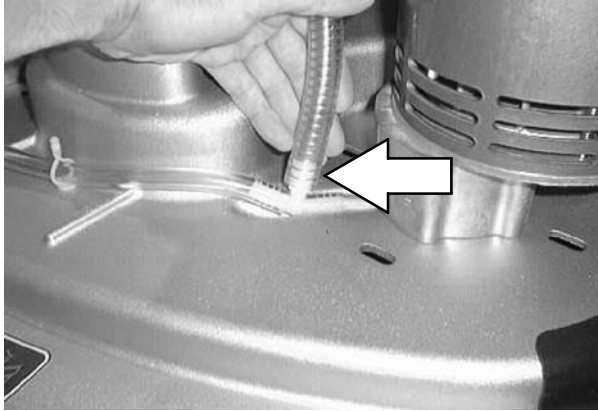


FIG. 10

LEVEL THE SCRUB HEAD:

1. Lower the scrub head.
2. Measure the distance from the top of the scrub head to the floor at all four corners. All four corners should be the same distance from the floor.
3. If the scrub head is not level, loosen the jam nut on the adjustment screw located on top of the scrub head. Turn the adjustment screw until the scrub head is level. Tighten the jam nut.
4. If necessary, repeat Step 2 and Step 3 until all four corners of the scrub head are level (the same distance from the floor).
5. Reinstall the front cover.
6. Reconnect the battery cables to the batteries.
7. Turn on the machine and check the scrub head for proper operation.

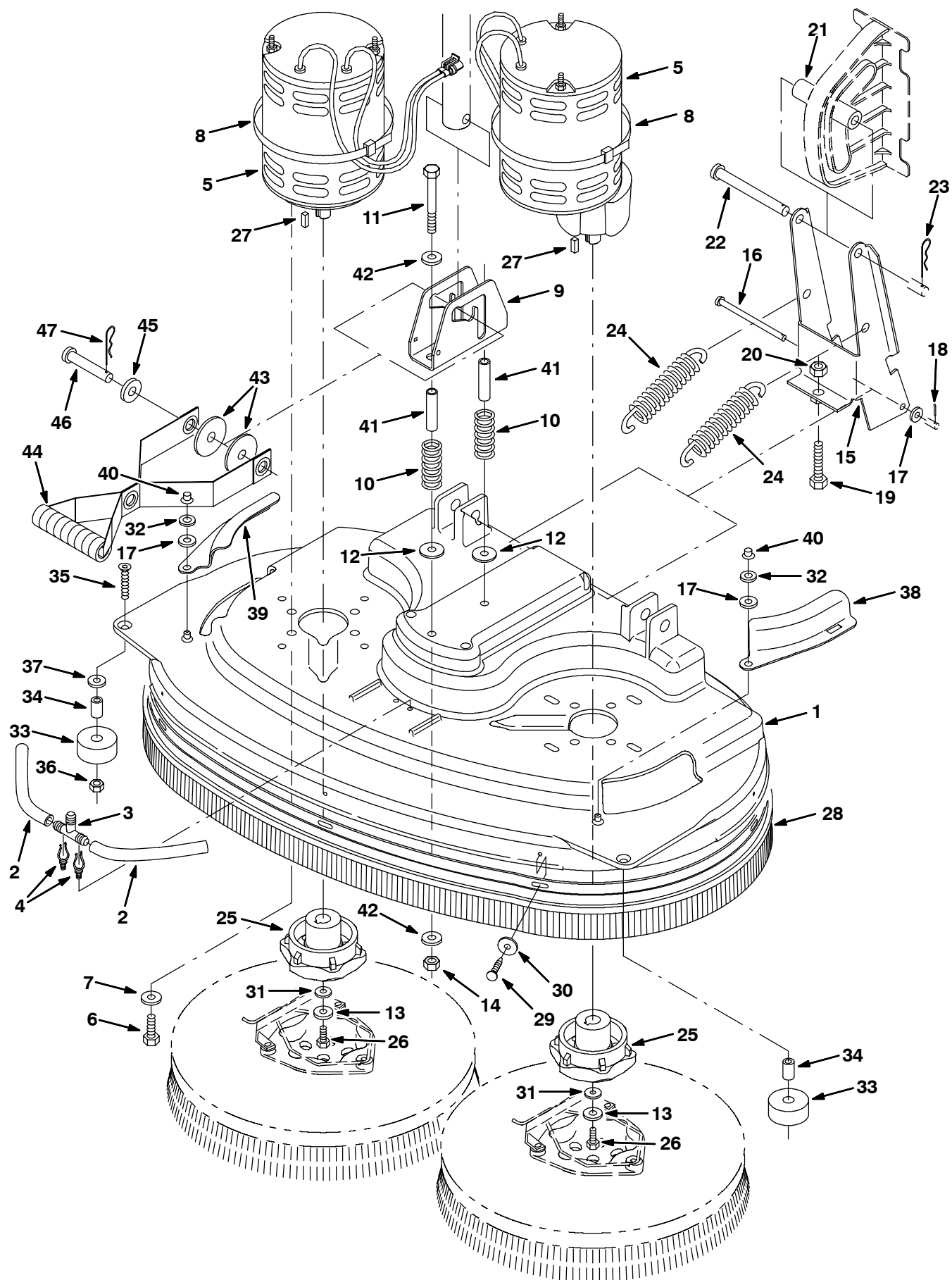


FIG. 11

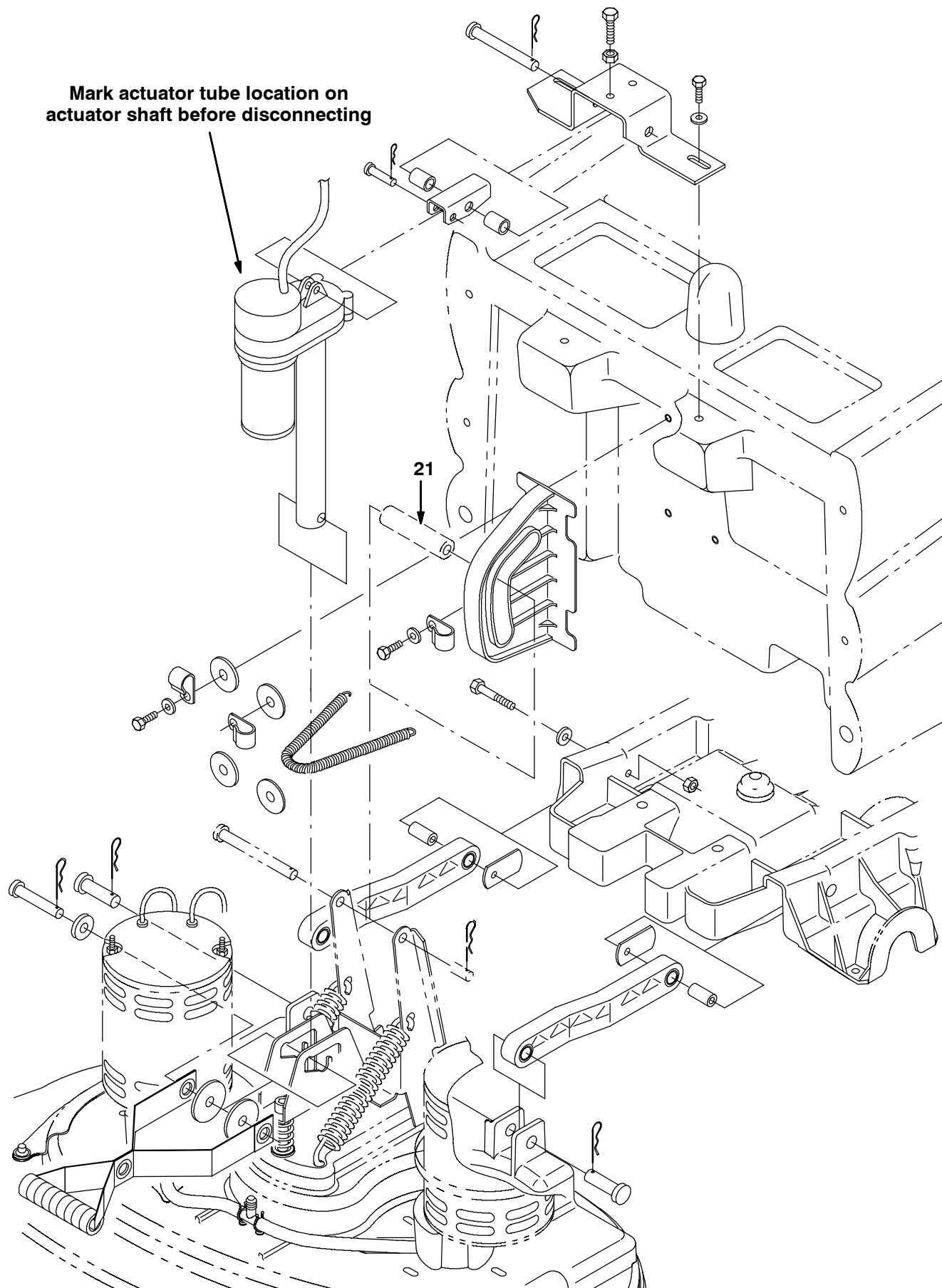


FIG. 12

BILL OF MATERIALS FOR 700D SCRUB HEAD KIT 397745

Ref.	Tennant Part No.	Machine Serial Number	Description	Qty.
1	222221	(000000-) Cover, Head, Scrbr, Disc [28]	1
2	222535	(000000-) Hose, Pvc, Clr, 0.38id 0.56od 08.00l	2
3	222536	(000000-) Fitting, Plstc, Tee, Bm06/Bm06/Bm08	1
4	30406	(000000-) Clip, Keeper	2
5	397815	(000000-) Motor, Ele, 36vdc .75hp Gear (See Breakdowns)	2
6	12317	(000000-) Screw, Hex, M10 X 1.5 X 30, Ss	8
7	41187	(000000-) Washer, Belleville, .38	8
8	44961	(000000-) Tie, Cable, Nyl, 14.5l .30w 4.0 Max D	4
9	397813	(000000-) Bracket, Head, Actuator	1
10	45261	(000000-) Spring, Cmpr, 0.97od .11wir 2.5l	2
11	35709	(000000-) Screw, Hex, .38-16 X 3.50, G5	2
12	32662	(000000-) Washer, 0.38b 1.22d .06, Ss	2
13	01686	(000000-) Washer, Flat, 0.44b 1.00d .08, Ss	2
14	59156	(000000-) Nut, Hex, Lock, .38-16, NI, Ss	2
15	222838	(000000-) Bracket, Pivot	1
16	222207	(000000-) Pin, Clevis, 0.31 D X 4.74l	1
17	01685	(000000-) Washer, Flat, 0.38b 0.88d .08, Ss	3
18	08346	(000000-) Pin, Cotter, .125 X 0.75	1
19	05720	(000000-) Screw, Hex, M10-1.5 X 40, Ss	1
20	39312	(000000-) Nut, Hex, Std, M10 X 1.5	1
21	222055	(000000-) Roller, Linkage, Head	1
22	222197	(000000-) Pin, Clevis, 0.50 D X 4.75l	1
23	02942	(000000-) Pin, Hair Cotter, 0.62 D .120 Wir	1
24	222363	(000000-) Spring, Extn, 1.23od X 0.15wir, 6.5l	2
25	377374	(000000-) Hub, Drive, Brush, Disk, 0.75b 6t	2
26	09011	(000000-) Screw, Hex, M08 X 1.25 X 30, Ss	2
27	00926	(000000-) Key, Sq, 0.25 X 0.25, 00.75l	2
28	1021919	(000000-) Skirt Assy, 28 Inch Disk Head	1
29	397780	(000000-) Plug, Plstc	7
30	397779	(000000-) Washer, 0.28b 1.00d .06t, Stl, Blk, Znc	7
31	41186	(000000-) Washer, Belleville, .31	2
32	32713	(000000-) Washer, 0.41b 0.81d .09, Ure	2
33	222403	(000000-) Wheel, 2.0d 0.88w 0.50b	2
34	222496	(000000-) Sleeve	2
35	33943	(000000-) Screw, Flat, M08 X 1.25 X 40, 10.9	2
36	08713	(000000-) Nut, Hex, Lock, M08 X 1.25,NI, Ss	2
37	32490	(000000-) Washer, Flt, .25 Std	2
38	222404	(000000-) Door, Scb Head, Lh	1
39	222405	(000000-) Door, Scb Head, Rh	1
40	59849	(000000-) Nut, Retainer, .312 Dia	2
41	1029425	(000000-) Tube, Rnd, 0.40id 0.50od 02.3l, Ss	2
42	01685	(000000-) Washer, Flat, 0.38b 0.88d .08, Ss	4
43	57048	(000000-) Washer, Flat, 0.53b 2.13d .11, Stl, Pl	2
44	397816	(000000-) Strap Assy, Handle	1
45	23996	(000000-) Washer, Flat, 0.53b 0.84d .06, Stl, Pl	1
46	397817	(000000-) Pin, Clevis, 0.50 D X 2.88l	1
47	02942	(000000-) Pin, Hair Cotter, 0.62 D .120 Wir	1

TENNANT COMPANY
P. O. Box 1452
Minneapolis, MN 55440-1452