

MACHINE MAINTENANCE

To keep the machine in good working condition, it's important that the following maintenance procedures are performed on a routine basis.

⚠ WARNING: Electrical Hazard. Disconnect Battery Cables Before Servicing Machine.

DAILY MAINTENANCE (After Every Use)

1. Drain the recovery tank (Figure 60).



FIG. 60

2. Rinse and clean out the recovery tank (Figure 61).



FIG. 61

3. Remove the recovery tank float shut-off screen and clean (Figure 62).



FIG. 62

4. Remove the debris tray and empty (Figure 63)



FIG. 63

5. Drain the solution tank (Figure 64).

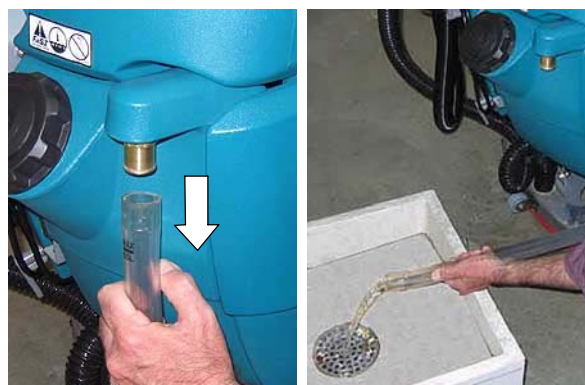


FIG. 64

6. Clean the solution tank filter (Figure 65).

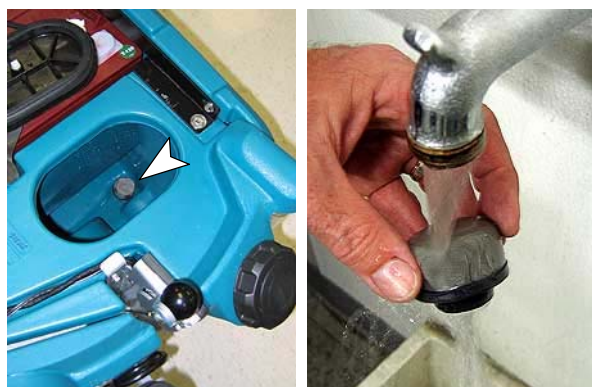
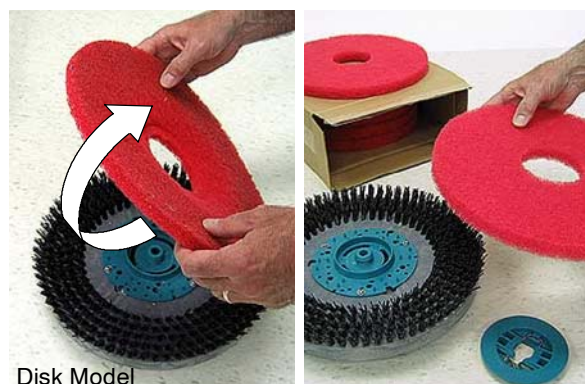


FIG. 65

7. Rotate pad or replace when worn (Figure 66).



Disk Model

FIG. 66

OPERATION

8. Empty and rinse out the debris trough (Figure 67).



FIG. 67

9. Inspect the cylindrical brushes for wear. Rotate brushes from front-to-rear every 50 hours (Figure 68). Replace when worn to a length of 5/8" (15mm).

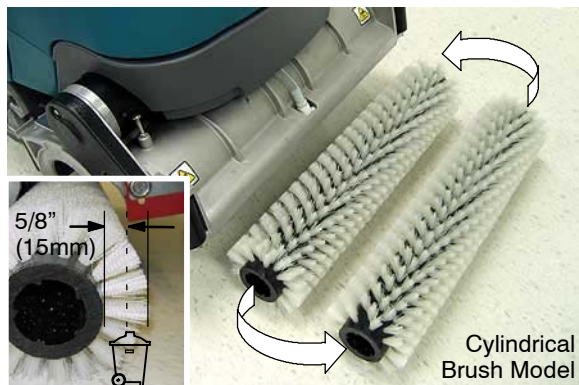


FIG. 68

10. Remove debris buildup from the underside of the cylindrical brush scrub head, including the idler plates and drive hubs (Figure 69).

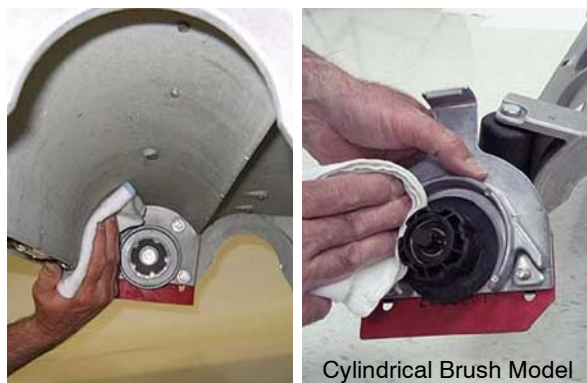


FIG. 69

11. Wipe the squeegee blades clean (Figure 70). Store the squeegee assembly in the raised position to prevent blade damage.



FIG. 70

12. Check the condition of the squeegee blade wiping edge (Figure 71). Rotate blade if worn (See SQUEEGEE BLADES).



FIG. 71

13. Clean the machine with an all purpose cleaner and damp cloth (Figure 72).

FOR SAFETY: When cleaning machine, do not power spray or hose off machine. Electrical malfunction may occur.



FIG. 72

14. Inspect the condition of the scrub head skirt, replace if worn or damaged (Figure 73).

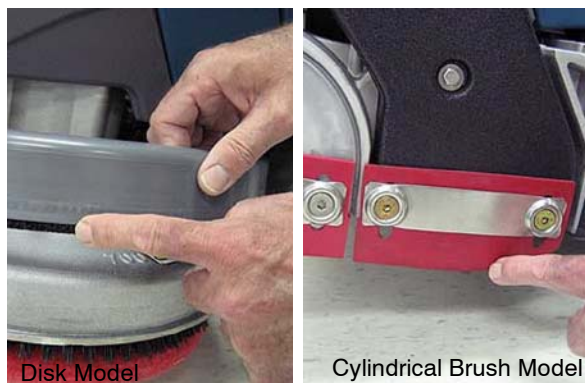


FIG. 73

15. FaST Model: Connect the FaST-PAK supply hose to the storage plug when not in use (Figure 74). Remove any dried concentrate from the hose connector by soaking it in warm water.



FIG. 74

16. Clean wet/lead acid batteries to prevent corrosion and check for loose battery cable connections (See BATTERY MAINTENANCE).
17. Recharge the batteries (Figure 75). To prolong the life of the batteries, only recharge the batteries if the machine was used for a total of 30 minutes or more.



FIG. 75

MONTHLY MAINTENANCE

1. Periodically check the belt tension on the two brush motors. Tighten the belt if you're able to twist it beyond 90° at midpoint (Figure 76).

⚠ WARNING: Electrical Hazard. Disconnect Battery Cables Before Servicing Machine.

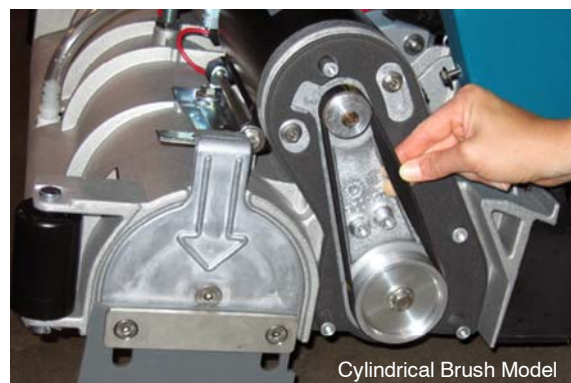


FIG. 76

2. Inspect and clean the recovery tank cover seal (Figure 77). Replace if damaged.



FIG. 77

3. Lubricate all pivot points and rollers with a water resistant grease.
4. Lubricate the casters with a water resistant grease (Figure 78).



FIG. 78

OPERATION

5. Clean the parking brake clamp with a cleaning solvent.
6. Check the machine for loose nuts and bolts.
7. Check the machine for leaks.

BATTERY MAINTENANCE (Wet/lead acid batteries)

1. Check battery fluid level frequently to prevent battery damage. The fluid should be at the level shown (Figure 79). Add distilled water if low. **DO NOT OVERFILL**, the fluid may expand and overflow when charging.



CORRECT BATTERY FLUID LEVEL:

Before Charging

After Charging

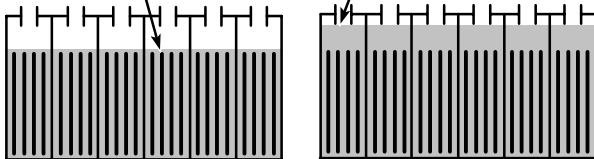


FIG. 79

⚠ WARNING: Fire Or Explosion Hazard. Batteries Emit Hydrogen Gas. Keep Sparks And Open Flame Away. Keep Battery Compartment Open When Charging.

2. Clean the batteries to prevent battery corrosion. Use a scrub brush with a mixture of baking soda and water (Figure 80).

FOR SAFETY: When cleaning batteries, wear protective gloves and eye protection. Avoid contact with battery acid.



FIG. 80

SQUEEGEE BLADES

When the blades become worn, simply rotate the blades end-for-end or top-to-bottom to a new wiping edge. Replace blades when all edges are worn.

The front blades on the 700mm/800mm squeegee assemblies have 12/14 slots on one edge and 6 slots on the opposite edge (Figure 81). If making sharp turns with the cylindrical brush models use the 12/14 slotted edge for maximum water pickup.

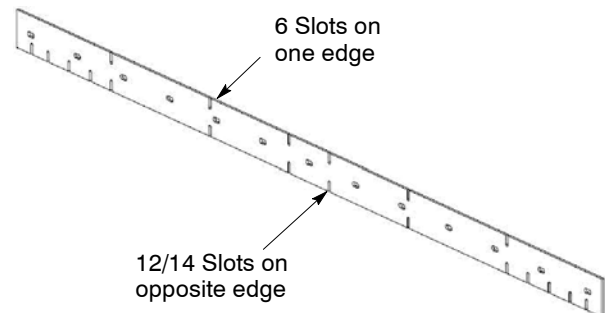


FIG. 81

Replacing Squeegee Blades:

1. Loosen the band clamp and remove the band from the squeegee assembly (Figure 82).

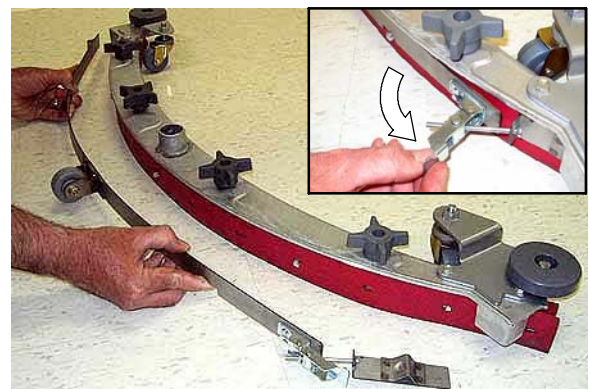


FIG. 82